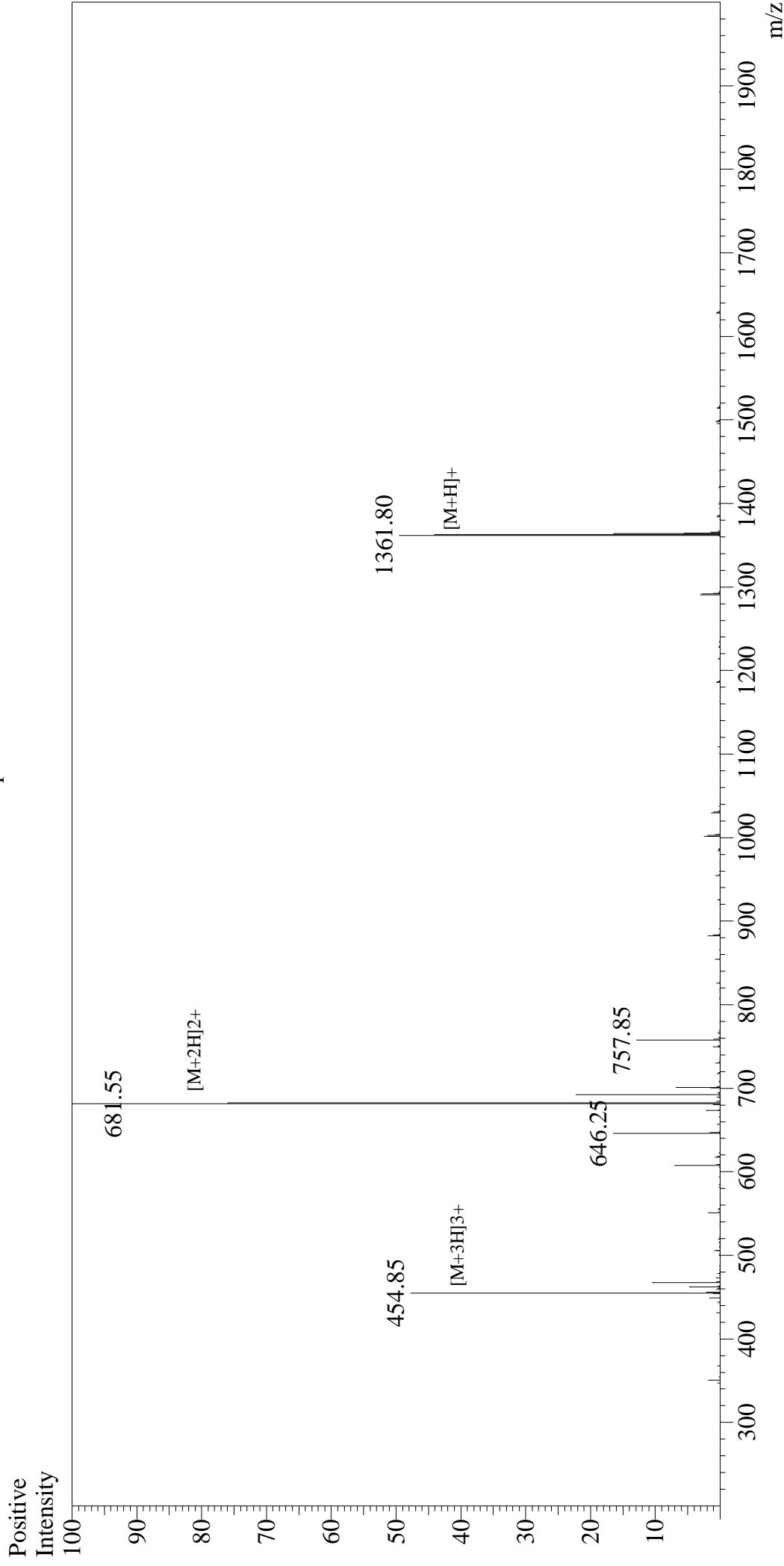


Mass Spectrum



Sample Information

User : Gary
Month-Day Processed : 11/16/16
Time Processed : 12:44:26
Injection Volume : 0.2
Sample Name : [Sar⁹]-Substance P
Cat No. : RPI0210
Lot No. : PE0361611
Theoretical MW : 1361.66
Observed MW : 1361.10

Interface : ESI
Nebulizing Gas Flow : 1.5L/min
CDL Temp : 250°C
Block Temp : 200°C

Interface Bias : +4.5kV
Drying Gas Flow : 5 L/min
T.Flow : 0.2ml/min
B.conc : 50%H₂O/50%MeOH