

Sample Name : [Sar⁹]-Substance P
 Cat. No. : RP10210
 Lot. No. : PE0361611

Pump A : 0.065% trifluoroacetic in 100% water (v/v)
 Pump B : 0.05% trifluoroacetic in 100% acetonitrile (v/v)
 Total Flow:1 ml/min
 Wavelength:220 nm

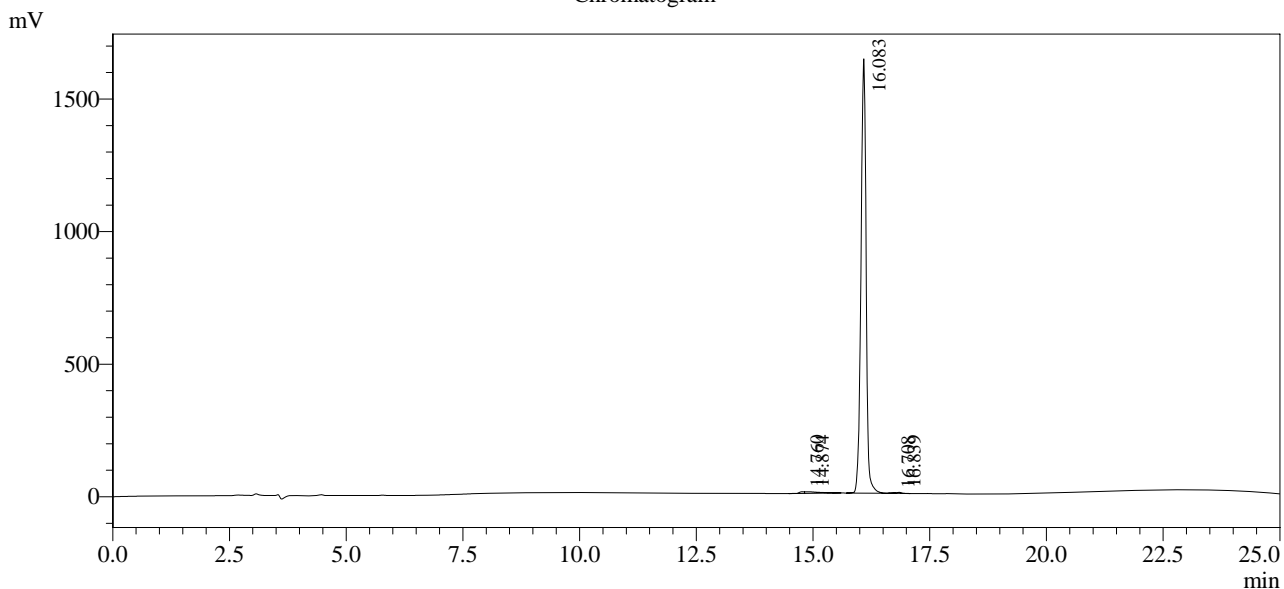
Time	Unit	Command	Value	Comment
0.01	Pumps	Pump A B.Conc	5	
25.00	Pumps	Pump A B.Conc	65	
25.01	Pumps	Pump A B.Conc	95	
31.00	Pumps	Pump A B.Conc	95	
31.01	Pumps	Pump A B.Conc	5	
40.00	Pumps	Pump A B.Conc	5	
40.01	Controller	Stop		

<<Column Performance>>

<Detector A>

Column : Alltima™ C18 4.6 x 250 mm

Chromatogram



1 Det.A Ch1 / 220nm

Peak Table

Detector A Ch1 220nm

Peak#	Ret. Time	Area	Height	Area %
1	14.760	45995	6375	0.358
2	14.874	132925	5974	1.035
3	16.083	12628046	1637376	98.296
4	16.708	12954	2440	0.101
5	16.839	26984	3972	0.210
Total		12846904	1656137	100.000