

Sample Name : Calcitonin Gene Related Peptide (CGRP) (8-37), human
 Cat. No. : RP11089
 Lot. No. : PE6881710

Pump A : 0.065% trifluoroacetic in 100% water (v/v)
 Pump B : 0.05% trifluoroacetic in 100% acetonitrile (v/v)
 Total Flow: 1 ml/min
 Wavelength: 220 nm

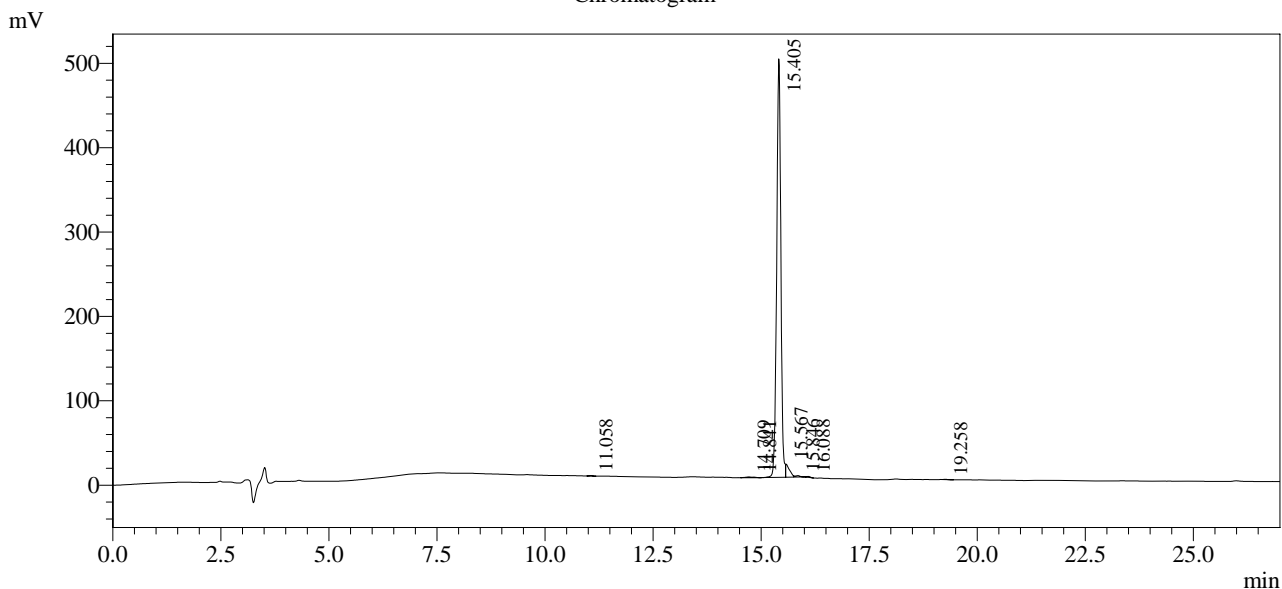
Time	Unit	Command	Value	Comment
0.01	Pumps	Pump B Conc.	5	
25.00	Pumps	Pump B Conc.	65	
25.01	Pumps	Pump B Conc.	95	
31.00	Pumps	Pump B Conc.	95	
31.01	Pumps	Pump B Conc.	5	
40.00	Pumps	Pump B Conc.	5	
40.01	Controller	Stop		

<<Column Performance>>

<Detector A>

Column : Alltima™ C18 4.6 x 250 mm

Chromatogram



1 Det.A Ch1 / 220nm

Peak Table

Detector A Ch1 220nm

Peak#	Ret. Time	Area	Height	Area %
1	11.058	2528	486	0.073
2	14.709	9622	957	0.278
3	14.841	2933	539	0.085
4	15.405	3331075	496023	96.307
5	15.567	90768	15621	2.624
6	15.846	13254	1639	0.383
7	16.088	6298	1180	0.182
8	19.258	2321	394	0.067
Total		3458800	516839	100.000