

Sample Name : Glucagon-Like Peptide (GLP) I (7-37)
 Cat. No.: RP12738
 Lot. No. :RP6051812
 Time Processed : 13:33:03
 Month-Day-Year Processed : 12/09/2018

Pump A : 0.065% trifluoroacetic in 100% water (v/v)
 Pump B : 0.05% trifluoroacetic in 100% acetonitrile (v/v)
 Total Flow:1 ml/min
 Wavelength:220 nm

Time	Unit	Command	Value	Comment
0.01	Pumps	Pump A B.Conc	5	
25.00	Pumps	Pump A B.Conc	65	
25.01	Pumps	Pump A B.Conc	95	
27.00	Pumps	Pump A B.Conc	95	
27.01	Pumps	Pump A B.Conc	5	
35.00	Pumps	Pump A B.Conc	5	
35.01	Controller	Stop		

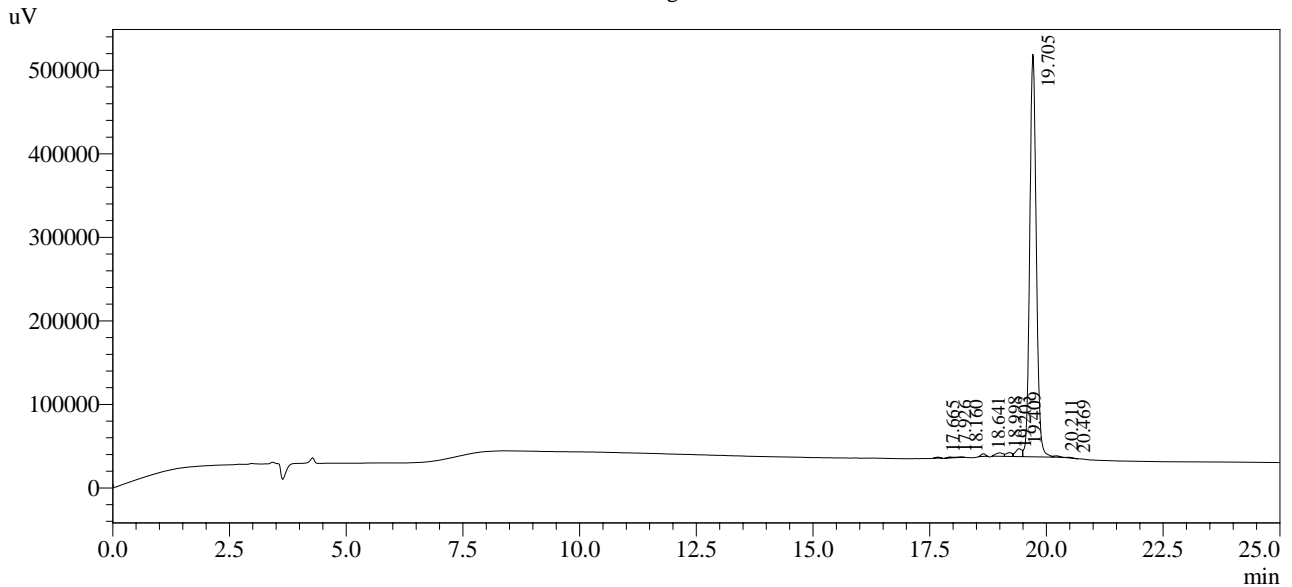
<<Column Performance>>

<Detector A>

Column : Inertsil ODS-3 4.6 x 250 mm

Equipment: GK11010017

Chromatogram



1 Det.A Ch1 / 220nm

Peak Table

Detector A Ch1 220nm

Peak#	Ret. Time	Area	Height	Area %
1	17.665	7333	1230	0.148
2	17.926	9456	1267	0.190
3	18.160	7710	688	0.155
4	18.641	20695	3251	0.417
5	18.998	46736	4141	0.941
6	19.203	41309	4654	0.832
7	19.409	90064	9433	1.813
8	19.705	4722703	482019	95.092
9	20.211	14333	1762	0.289
10	20.469	6125	719	0.123
Total		4966466	509164	100.000