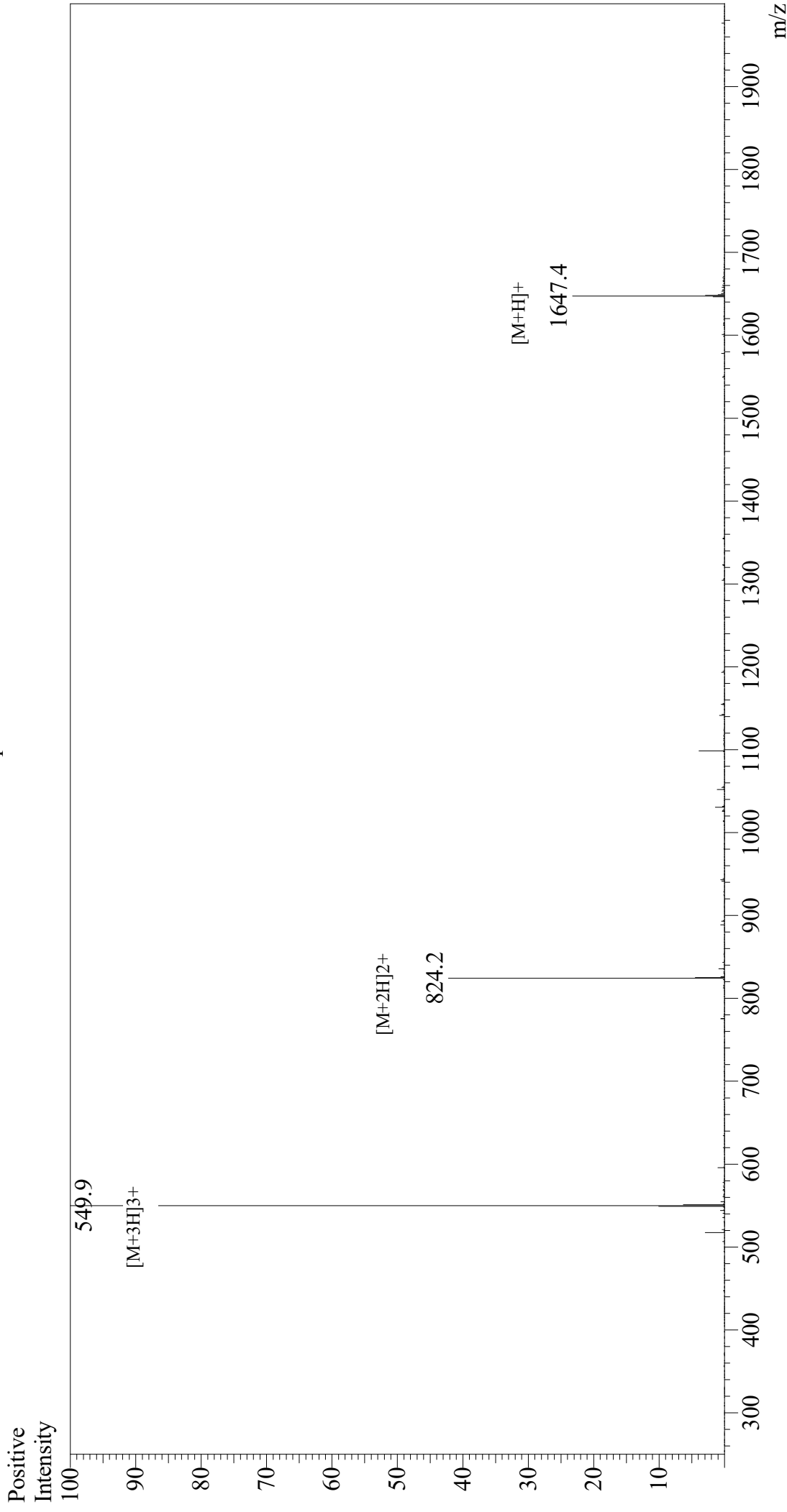


# Mass Spectrum



### Sample Information

Month-Day Processed : 08/18/21  
Time Processed : 9:13:26  
Injection Volume : 0.2  
Sample Name : [Nle4, D-Phe7]- $\alpha$ -MSH, amide  
Cat No. : RP10658  
Lot No. : E7836921H  
Theoretical MW : 1647.00  
Observed MW : 1646.7

Interface : ESI  
Nebulizing Gas Flow : 1.5L/min  
CDL Temp : 250  
Block Temp : 200

Equipment : GK11010007  
Interface Bias : +3.5 kV  
Drying Gas Flow : 5 L/min  
T.Flow : 0.2 ml/min  
B.conc : 50% H<sub>2</sub>O/50% MeOH