

Sample Name : Luteinizing Hormone Releasing Hormone (LH-RH), human
 Cat. No. : RP11937
 Lot. No. : E7242920B
 Time Processed : 9:35:48
 Month-Day-Year Processed : 02/02/2020

Pump A : 0.065% trifluoroacetic in 100% water (v/v)
 Pump B : 0.05% trifluoroacetic in 100% acetonitrile (v/v)
 Total Flow: 1 ml/min
 Wavelength: 220 nm

Time	Unit	Command	Value	Comment
0.01	Pumps	Pump B Conc.	5	
25.00	Pumps	Pump B Conc.	65	
25.01	Pumps	Pump B Conc.	95	
27.00	Pumps	Pump B Conc.	95	
27.01	Pumps	Pump B Conc.	5	
35.00	Pumps	Pump B Conc.	5	
35.01	Controller	Stop		

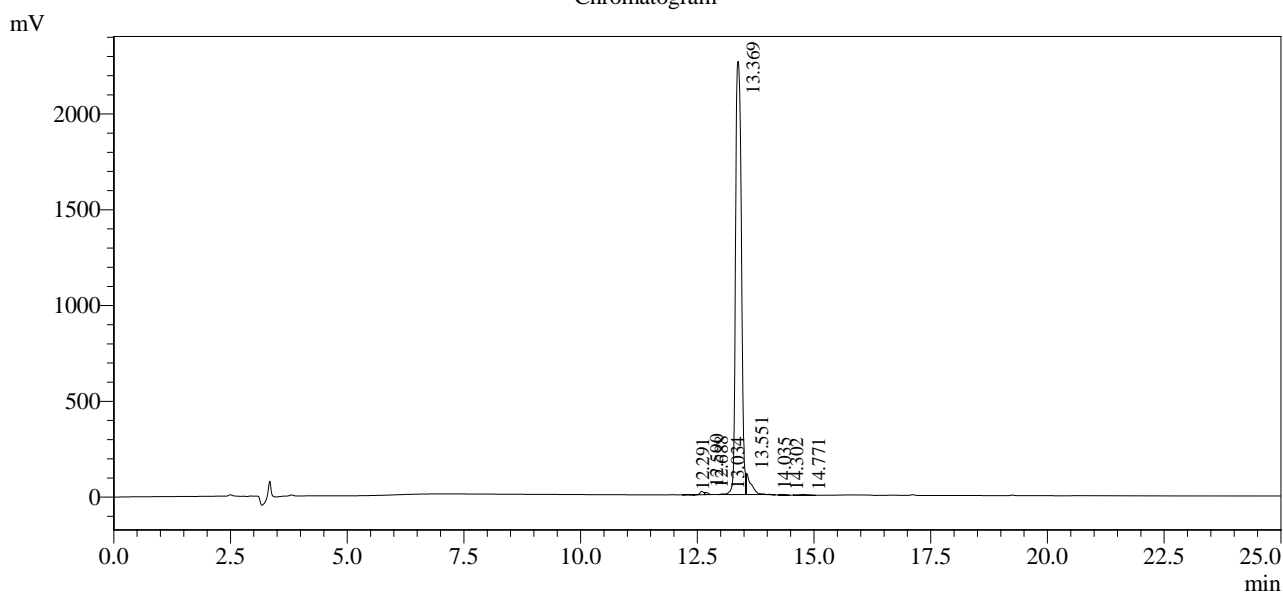
<<Column Performance>>

<Detector A>

Column : Inertsil ODS-3 4.6 x 250 mm

Equipment: SS-CM-0309

Chromatogram



1 Det.A Ch1 / 220nm

Peak Table

Detector A Ch1 220nm

Peak#	Ret. Time	Area	Height	Area %
1	12.291	7129	1519	0.035
2	12.590	102560	17498	0.498
3	12.688	52112	11024	0.253
4	13.034	19755	3517	0.096
5	13.369	19578727	2261810	95.051
6	13.551	799631	110274	3.882
7	14.035	4872	1567	0.024
8	14.302	5625	964	0.027
9	14.771	27812	2810	0.135
Total		20598224	2410985	100.000