

Sample Name : β -Amyloid (1-42), rat
 Cat No. :RP10013
 Lot No. : E6965219J
 Time Processed : 17:21:58
 Month-Day-Year Processed : 10/10/2019

Pump A : 0.065% trifluoroacetic in 100% water (v/v)
 Pump B : 0.05% trifluoroacetic in 100% acetonitrile (v/v)
 Total Flow: 1 ml/min
 Wavelength: 220 nm

Time	Unit	Command	Value	Comment
0.01	Pumps	Pump B Conc.	5	
25.00	Pumps	Pump B Conc.	65	
25.01	Pumps	Pump B Conc.	95	
31.00	Pumps	Pump B Conc.	95	
31.01	Pumps	Pump B Conc.	5	
37.00	Pumps	Pump B Conc.	5	
40.01	Controller	Stop		

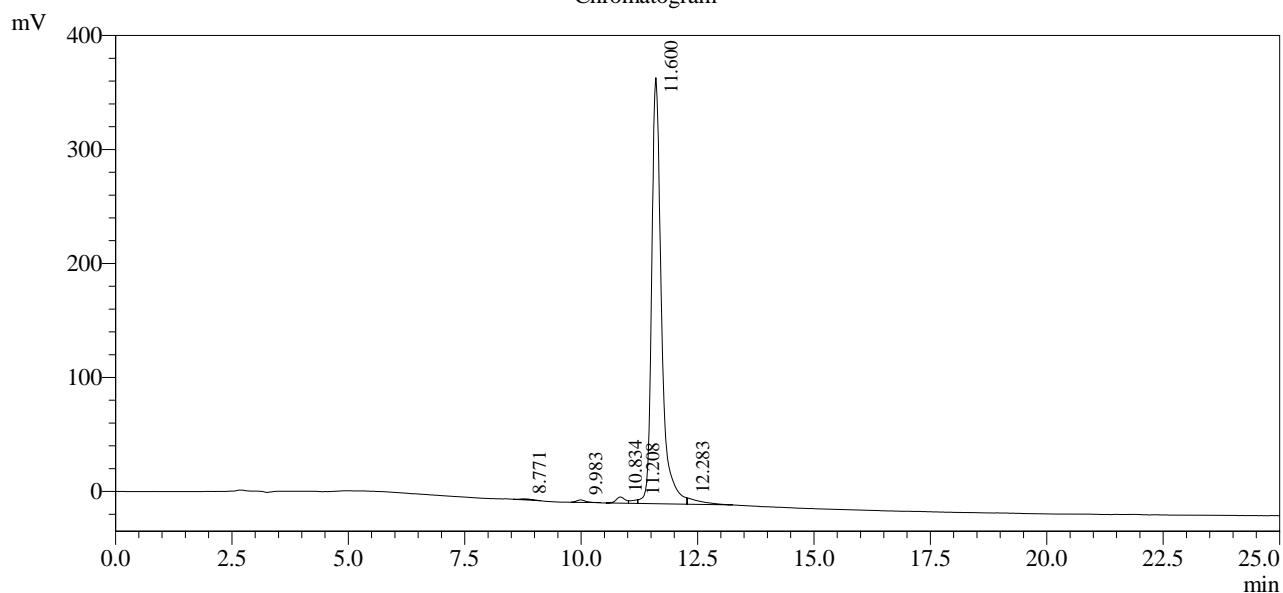
<<Column Performance>>

<Detector A>

Column : AlltimaTM C18 4.6 x 250 mm

Equipment: GR09010180

Chromatogram



1 Det.A Ch1 / 220nm

Peak Table

Detector A Ch1 220nm

Peak#	Ret. Time	Area	Height	Area %
1	8.771	16285	906	0.285
2	9.983	28593	2116	0.500
3	10.834	71915	5363	1.256
4	11.208	31343	3120	0.548
5	11.600	5468839	373662	95.547
6	12.283	106725	5470	1.865
Total		5723702	390637	100.000