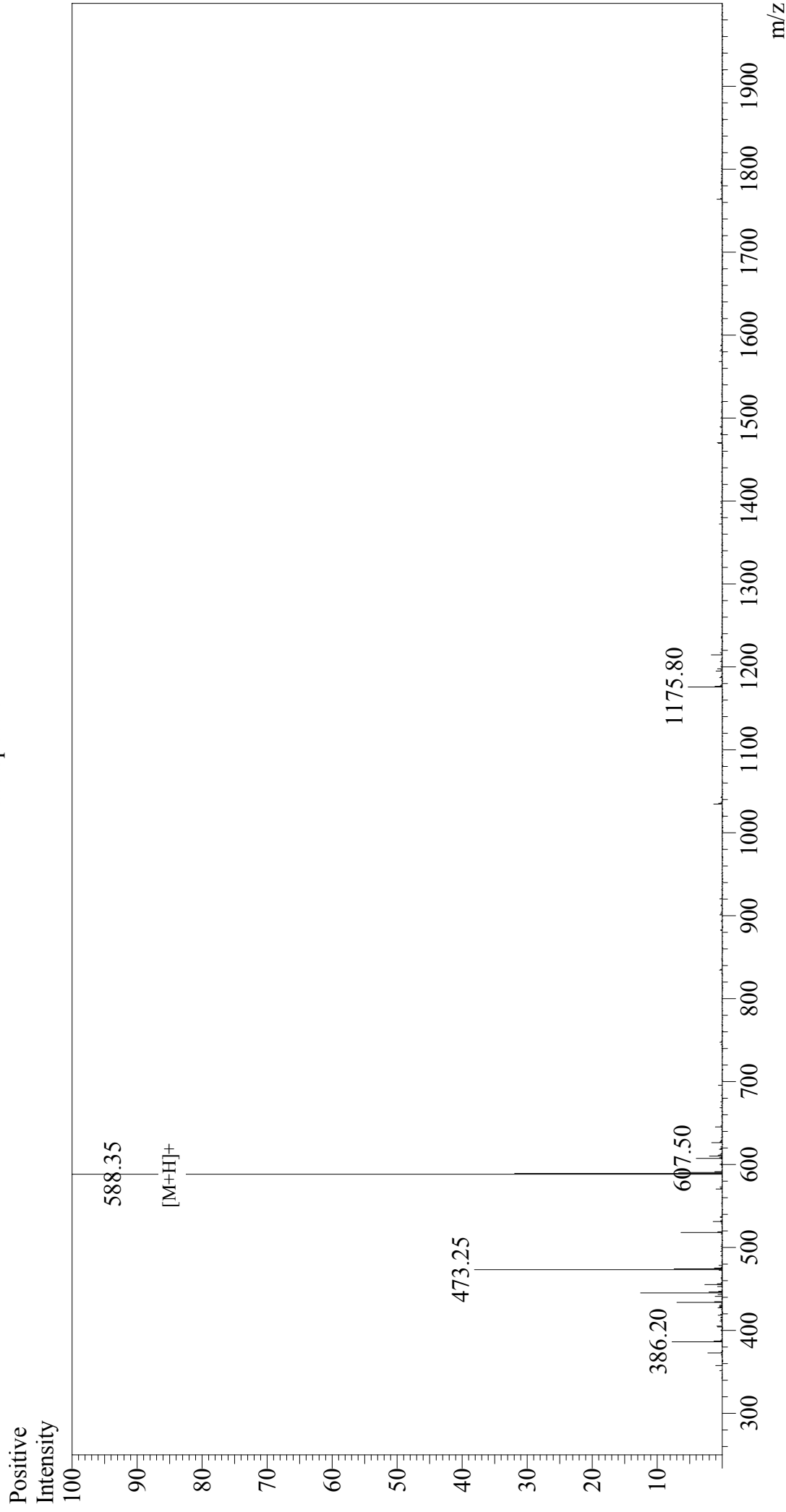


Mass Spectrum



Sample Information

Acquired by : Gary
Month-Day Processed : 11/27/17
Time Processed : 16:06:38
Injection Volume : 0.2
Sample Name : GRGDSP
Cat. No. : RP20255
Lot. No. : PE7141710
Theoretical MW : 587.59
Observed MW : 587.35

Interface : ESI
Nebulizing Gas Flow : 1.5L/min
CDL Temp : 250°C
Block Temp : 200°C

Interface Bias
Drying Gas Flow
T.Flow
B.conc

: +4.5 kV
: 5 L/min
: 0.2 ml/min
: 50% H₂O/50% MeOH