

Sample Name : VIP, human, ovine, porcine, rat  
 Cat. No. : RP10085  
 Lot. No. : E7068919K  
 Time Processed : 8:16:04  
 Month-Day-Year Processed : 11/29/2019

Pump A : 0.065% trifluoroacetic in 100% water (v/v)  
 Pump B : 0.05% trifluoroacetic in 100% acetonitrile (v/v)  
 Total Flow:1 ml/min  
 Wavelength:220 nm

| Time  | Unit       | Command      | Value | Comment |
|-------|------------|--------------|-------|---------|
| 0.01  | Pumps      | Pump B Conc. | 5     |         |
| 25.00 | Pumps      | Pump B Conc. | 65    |         |
| 25.01 | Pumps      | Pump B Conc. | 95    |         |
| 27.00 | Pumps      | Pump B Conc. | 95    |         |
| 27.01 | Pumps      | Pump B Conc. | 5     |         |
| 35.00 | Pumps      | Pump B Conc. | 5     |         |
| 35.01 | Controller | Stop         |       |         |

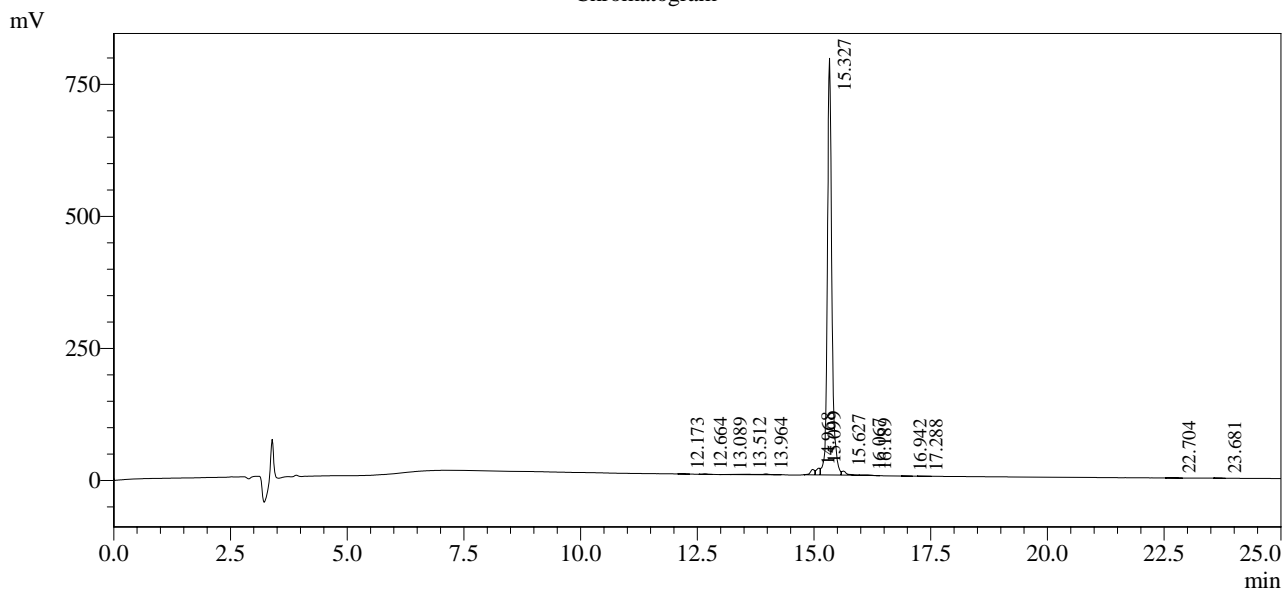
<<Column Performance>>

<Detector A>

Column :Inertsil ODS-3 4.6 x 250 mm

Equipment: SS-CM-0309

Chromatogram



1 Det.A Ch1 / 220nm

Peak Table

Detector A Ch1 220nm

| Peak# | Ret. Time | Area    | Height | Area %  |
|-------|-----------|---------|--------|---------|
| 1     | 12.173    | 1797    | 298    | 0.033   |
| 2     | 12.664    | 4591    | 794    | 0.084   |
| 3     | 13.089    | 1189    | 184    | 0.022   |
| 4     | 13.512    | 18576   | 1009   | 0.338   |
| 5     | 13.964    | 12126   | 1546   | 0.221   |
| 6     | 14.968    | 66374   | 10232  | 1.209   |
| 7     | 15.099    | 71855   | 12572  | 1.309   |
| 8     | 15.327    | 5245611 | 789063 | 95.556  |
| 9     | 15.627    | 51571   | 7521   | 0.939   |
| 10    | 16.067    | 3487    | 550    | 0.064   |
| 11    | 16.189    | 6120    | 893    | 0.111   |
| 12    | 16.942    | 1339    | 225    | 0.024   |
| 13    | 17.288    | 1236    | 169    | 0.023   |
| 14    | 22.704    | 1550    | 143    | 0.028   |
| 15    | 23.681    | 2146    | 284    | 0.039   |
| Total |           | 5489567 | 825480 | 100.000 |