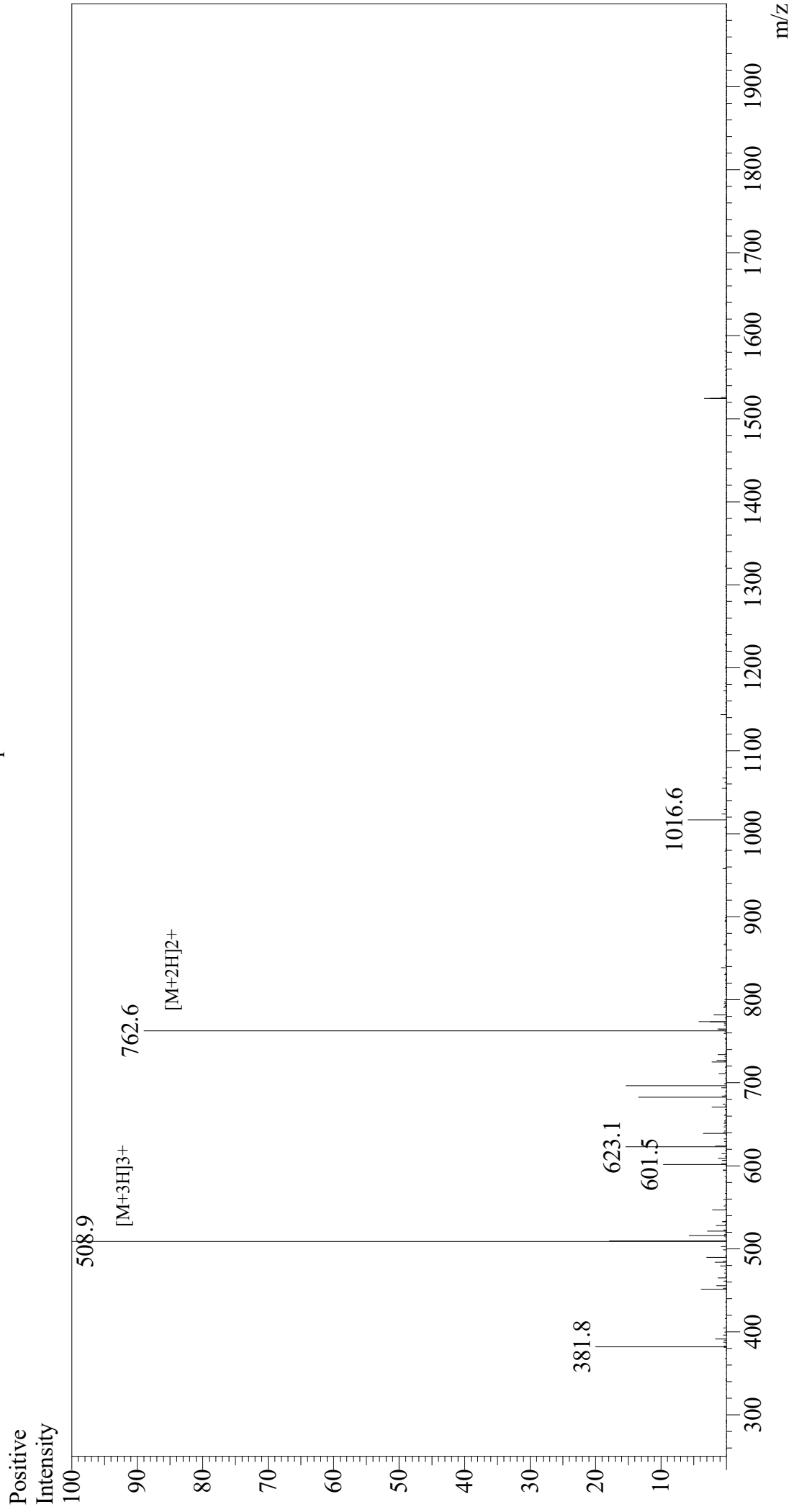


Mass Spectrum



Sample Information

Month-Day Processed : 10/27/20
Time Processed : 03:34:58 PM
Injection Volume : 0.4
Sample Name : Osteogenic Growth Peptide, OGP
Cat No. : RP20311
Lot No. : E0553020J
Theoretical MW : 1523.76
Observed MW : 1523.7

Interface : ESI
Nebulizing Gas Flow : 1.5L/min
CDL Temp : 250
Block Temp : 200

Equipment : GK11010007
Interface Bias : +3.5 kV
Drying Gas Flow : 5 L/min
T.Flow : 0.2 ml/min
B.conc : 50%H2O/50%MeOH