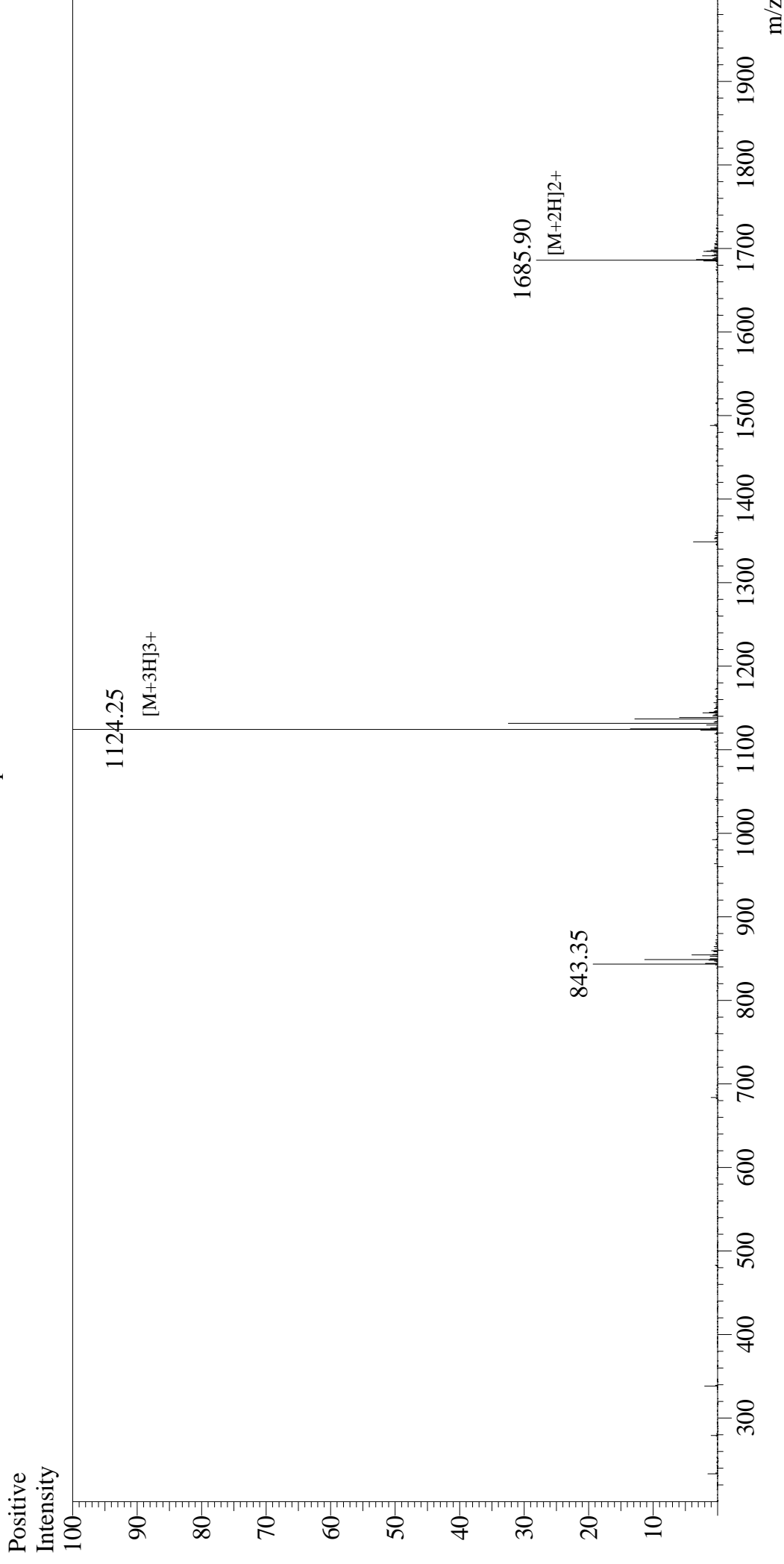


Mass Spectrum



Sample Information

User : Gary
 Month-Day Processed : 06/23/17
 Time Processed : 14:17:35
 Injection Volume : 0.2
 Sample Name : Exendin (9-39)
 Cat No. : RP10872
 Lot No. : PE5411706
 Theoretical MW : 3369.76
 Observed MW : 3369.75

Interface : ESI
 Nebulizing Gas Flow : 1.5L/min
 CDL Temp : 250°C
 Block Temp : 200°C

Interface Bias : +4.5kV
 Drying Gas Flow : 5 L/min
 T.Flow : 0.2ml/min
 B.conc : 50% H2O/50% MeOH