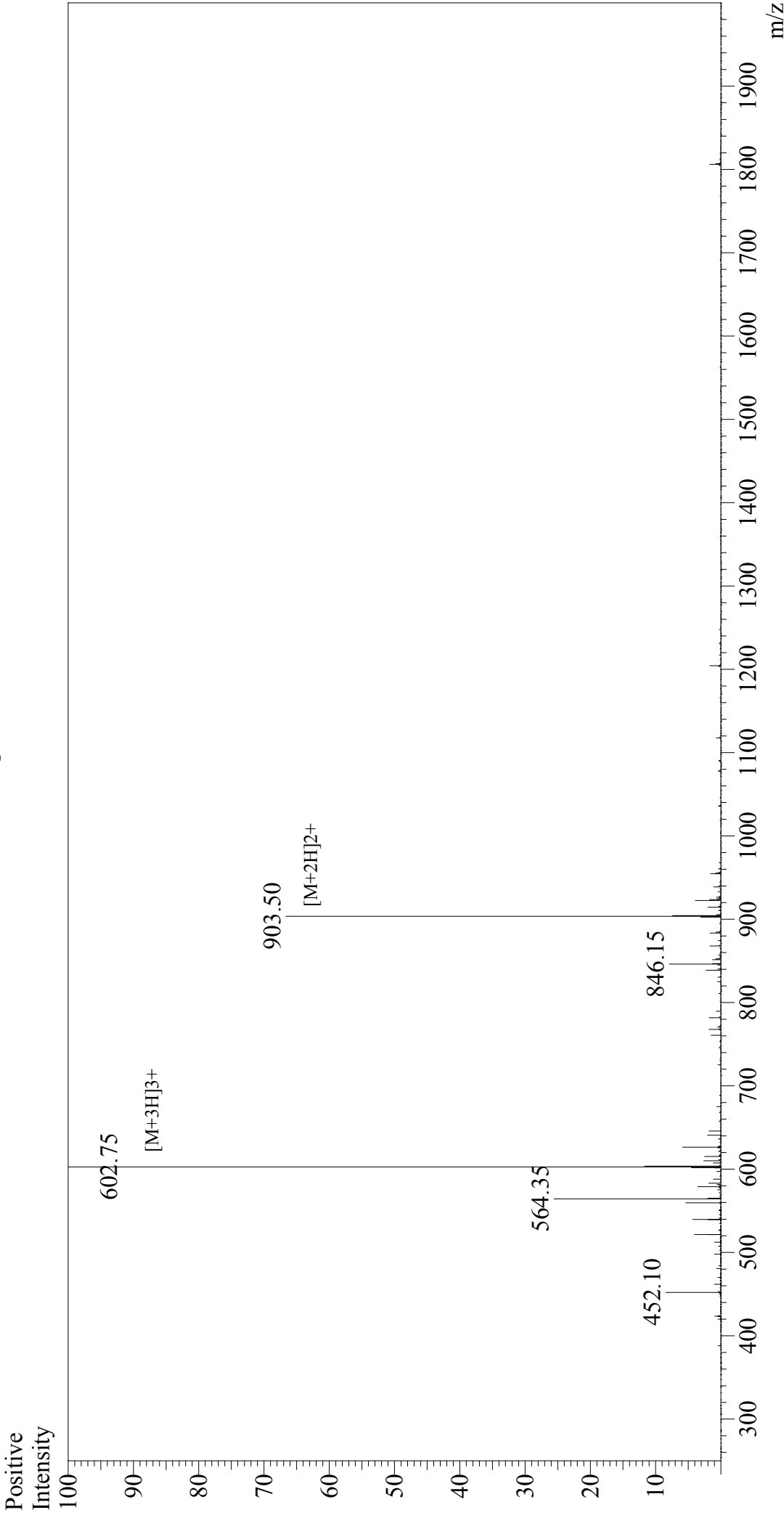


Mass Spectrum



Sample Information

Acquired by : Gary
Month-Day Processed : 10/20/17
Time Processed : 11:30:36
Injection Volume : 0.2
Sample Name : Moth Cytochrome C (MCC) (88-103)
Cat. No. : RPI2808
Lot. No. : PE7751603
Theoretical MW : 1805.05
Observed MW : 1805.25

Interface : ESI
Nebulizing Gas Flow : 1.5L/min
CDL Temp : 250°C
Block Temp : 200°C

Interface Bias
Drying Gas Flow
T.Flow
B.conc

: +4.5 kV
: 5 L/min
: 0.2 ml/min
: 50% H₂O/50% MeOH