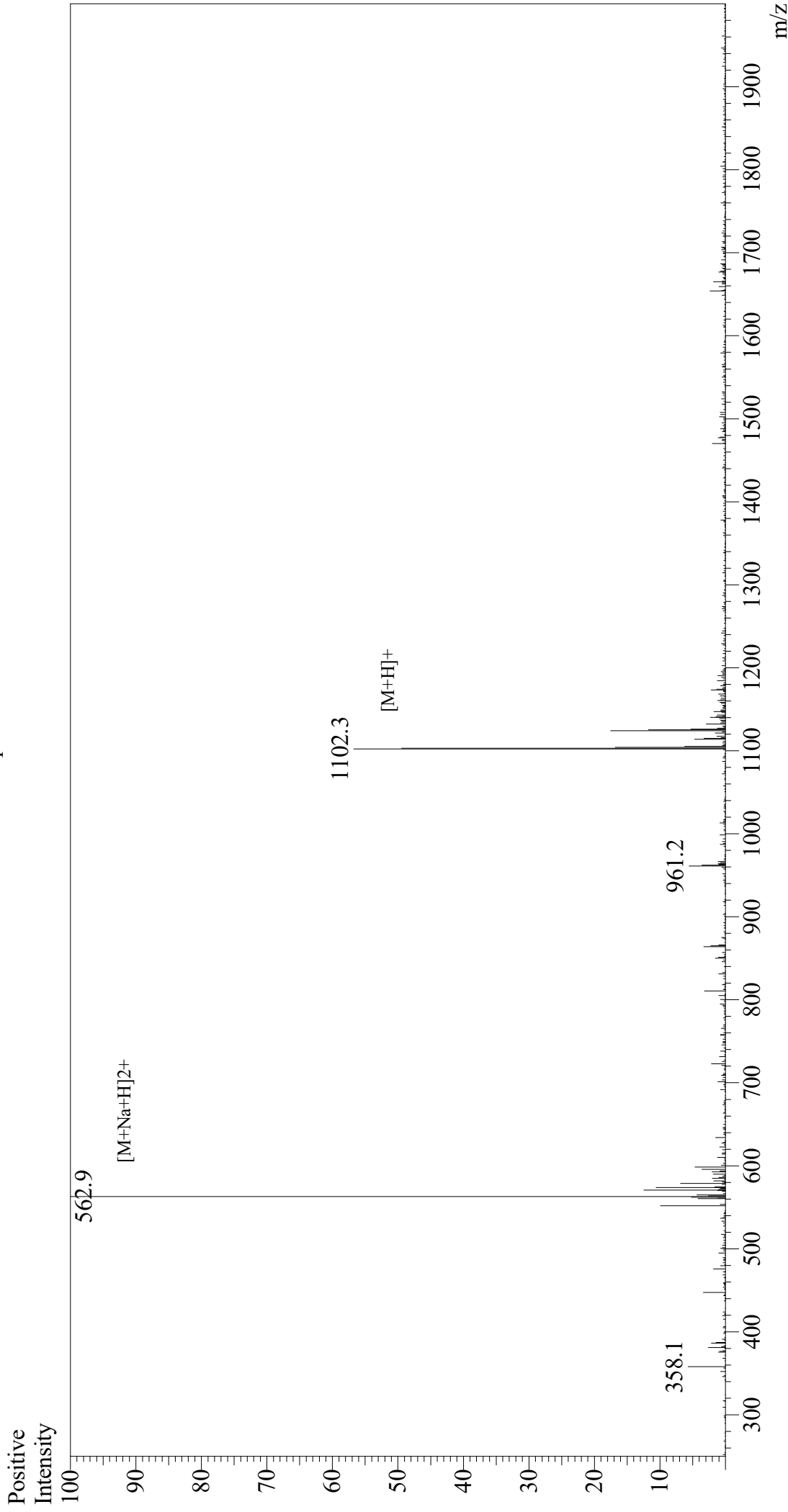


Mass Spectrum



Sample Information
Month-Day Processed : 12/22/20
Time Processed : 8:49:24 PM
Injection Volume : 0.4
Sample Name : HA Peptide
Cat No. : RP11735
Lot No. : E7887220L
Theoretical MW : 1102.15
Observed MW : 1102.8

Interface : ESI
Nebulizing Gas Flow : 1.5L/min
CDL Temp : 250
Block Temp : 200

Equipment : GK11010007
Interface Bias : +3.5 kV
Drying Gas Flow : 5 L/min
T.Flow : 0.2 ml/min
B.conc : 50%H₂O/50%MeOH