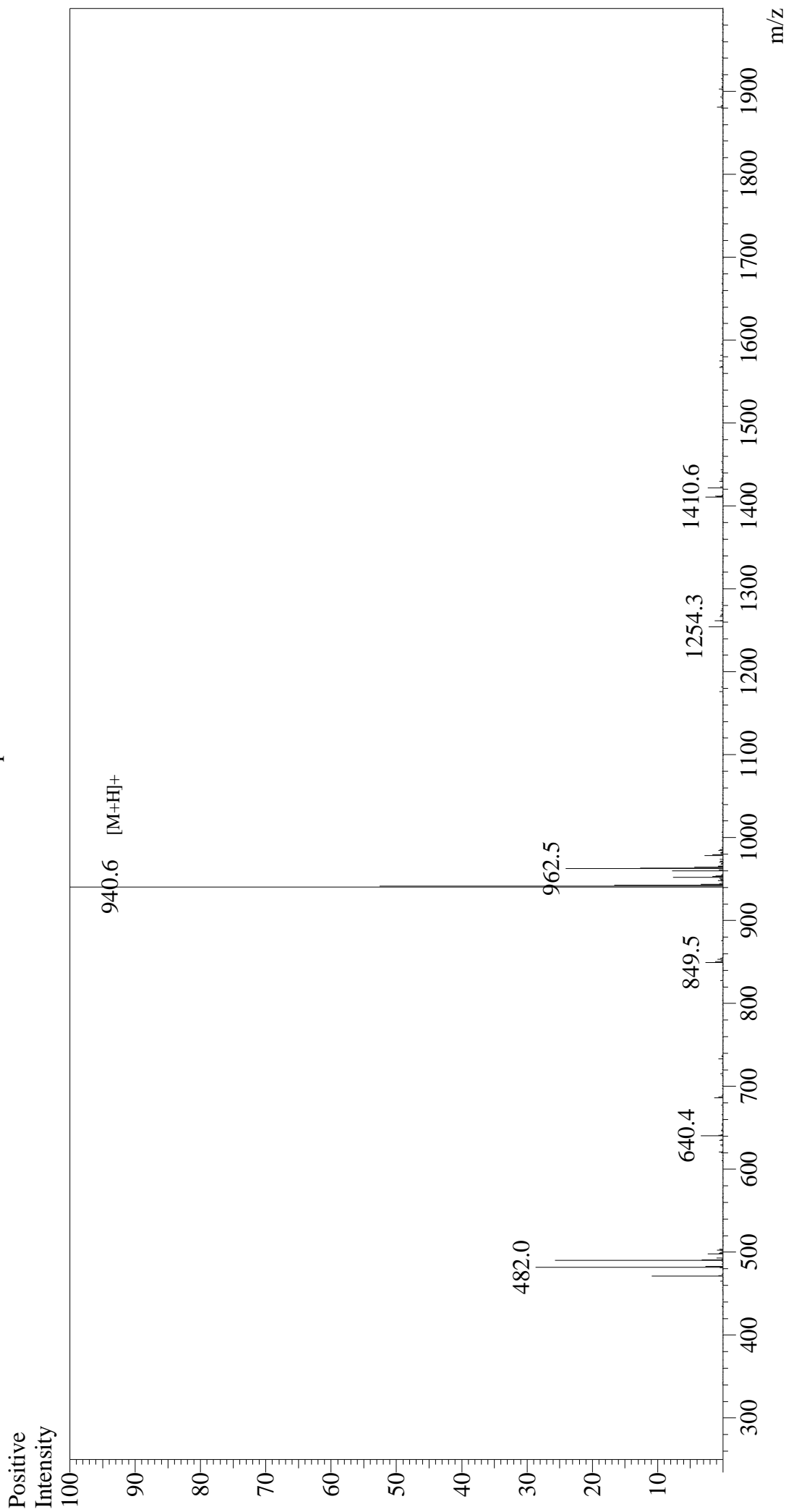


# Mass Spectrum



## Sample Information

Acquired by : Gary  
 Month-Day Processed : 11/18/18  
 Time Processed : 21:08:18  
 Injection Volume : 0.2  
 Sample Name : Influenza HA (518-526)  
 Cat. No. : RP20284  
 Lot. No. : PE1791811  
 Theoretical MW : 940.05  
 Observed MW : 939.6

Interface : ESI  
 Nebulizing Gas Flow : 1.5L/min  
 CDL Temp : 250°C  
 Block Temp : 200°C

Equipment : GK11010007  
 Interface Bias : +4.5 kV  
 Drying Gas Flow : 5 L/min  
 T.Flow : 0.2 ml/min  
 B.conc : 50% H2O/50% MeOH