

Sample Name : Glucagon-Like Peptide (GLP) I (7-36), amide, human

Cat No. : RP10773

Lot No. : E62472201

Time Processed : 18:06:43

Month-Day-Year Processed : 08/24/2020

Pump A : 0.065% trifluoroacetic in 100% water (v/v)

Pump B : 0.05% trifluoroacetic in 100% acetonitrile (v/v)

Total Flow: 1 ml/min

Wavelength: 220 nm

<<LC Time Program>>

Time	Module	Command	Value
0.01	Pumps	Pump A B.Conc	5
25.00	Pumps	Pump A B.Conc	65
25.01	Pumps	Pump A B.Conc	95
27.00	Pumps	Pump A B.Conc	95
27.01	Pumps	Pump A B.Conc	5
35.00	Pumps	Pump A B.Conc	5
35.01	Controller	Stop	

<<Column Performance>>

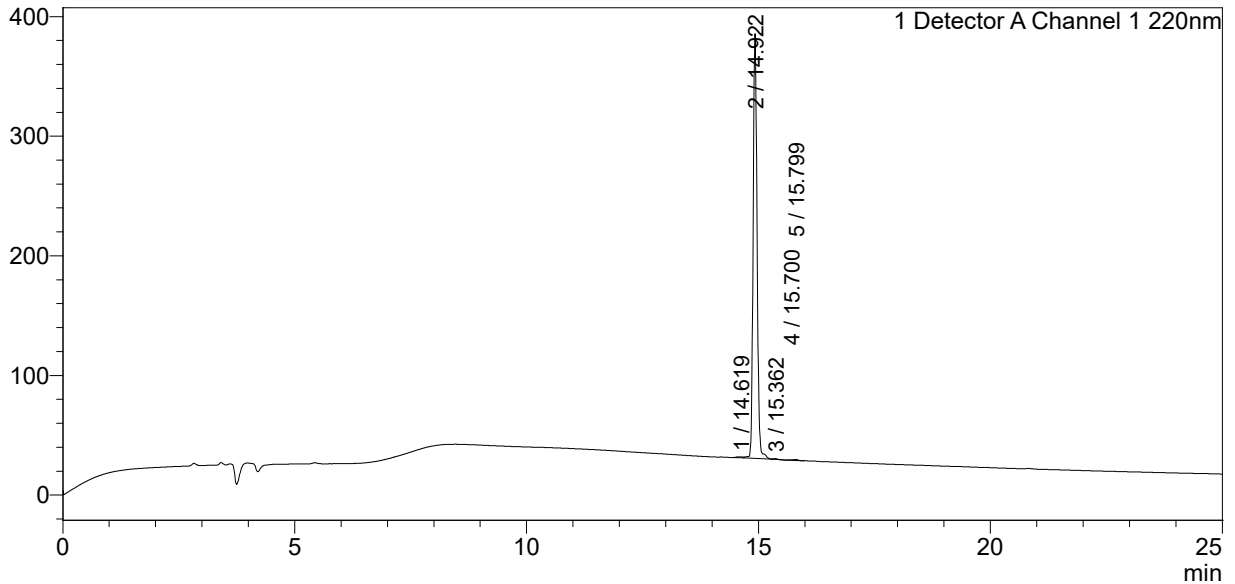
<Detector A>

Column : Inertsil ODS-3 4.6 x 250 mm

Equipment: ZJ19010324

<Chromatogram>

mV



<Peak Table>

Detector A Channel 1 220nm

Peak#	Ret. Time	Area	Height	Area%
1	14.619	7664	843	0.360
2	14.922	2112799	355170	99.140
3	15.362	3813	644	0.179
4	15.700	1633	363	0.077
5	15.799	5209	884	0.244
Total		2131119	357904	100.000