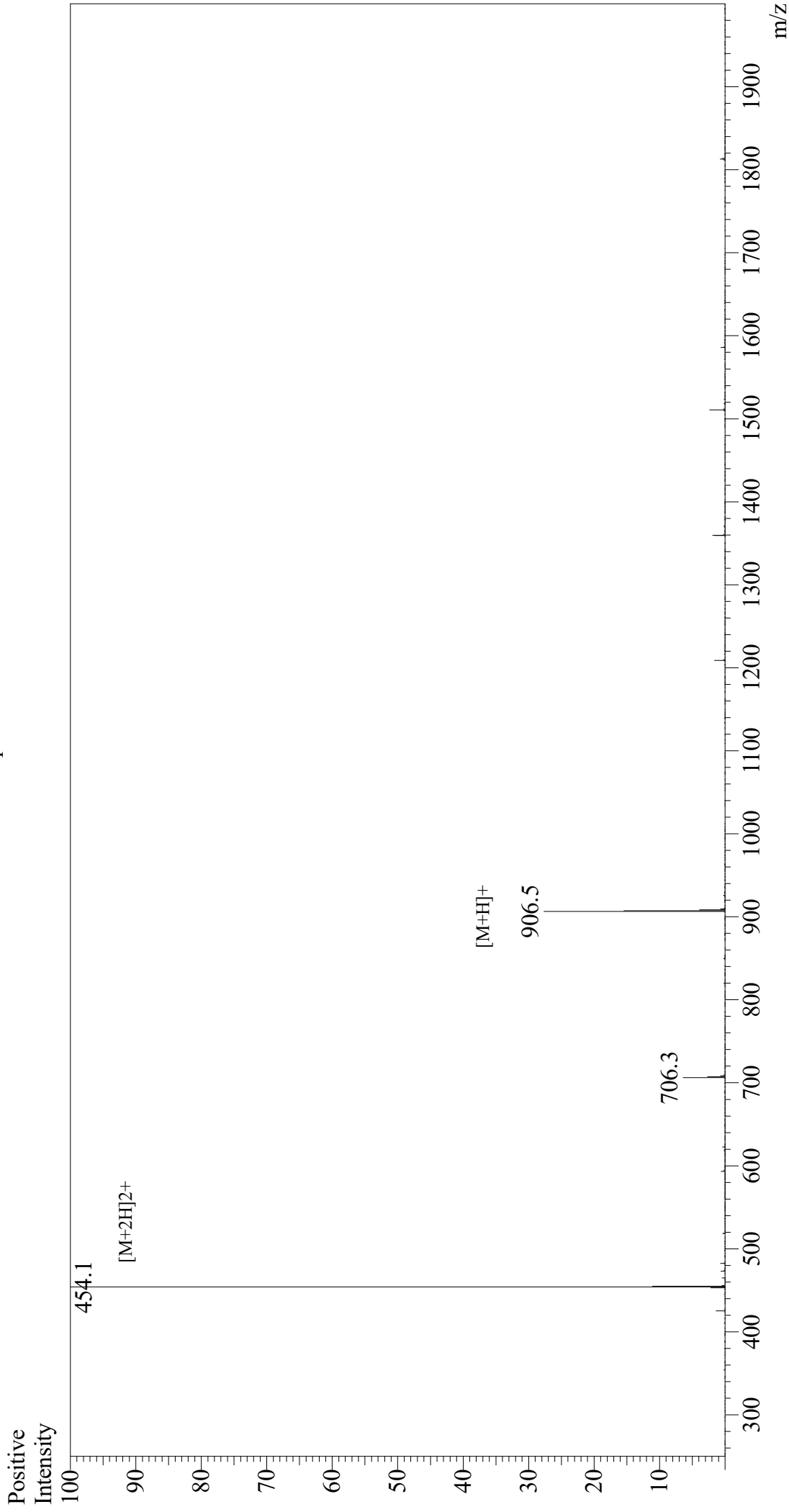


Mass Spectrum



Sample Information
Month-Day Processed : 07/22/21
Time Processed : 10:46:46 AM
Injection Volume : 0.4
Sample Name : OVA G4 peptide
Cat No. : RP20398
Lot No. : E4840921G
Theoretical MW : 906.08
Observed MW : 906.2

Interface : ESI
Nebulizing Gas Flow : 1.5L/min
CDL Temp : 250
Block Temp : 200

Equipment : GK11010007
Interface Bias : +3.5 kV
Drying Gas Flow : 5 L/min
T.Flow : 0.2 ml/min
B.conc : 50%H2O/50%MeOH