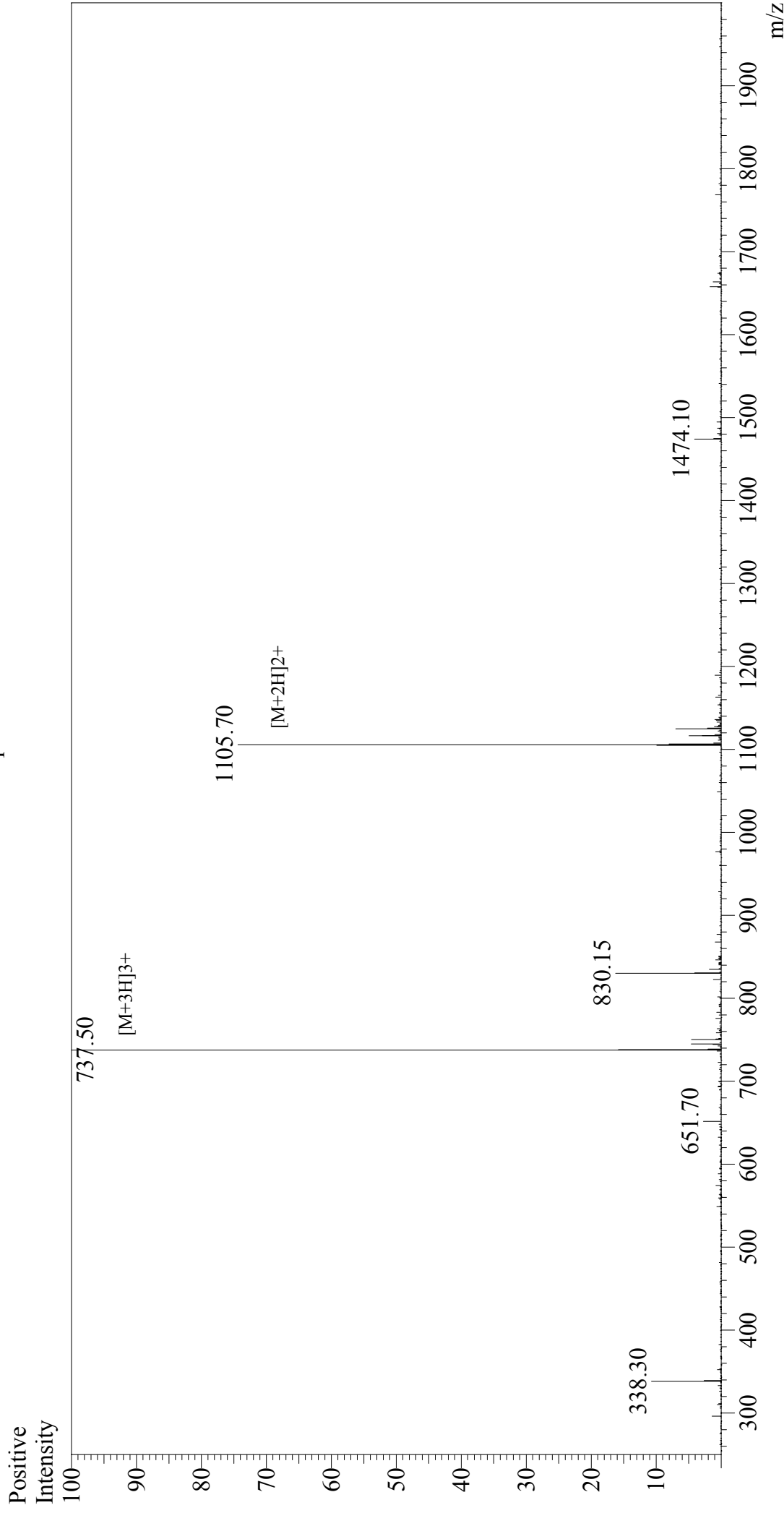


Mass Spectrum



Sample Information

Acquired by : Gary
Month-Day Processed : 11/22/17
Time Processed : 15:22:03
Injection Volume : 0.4
Sample Name : IRBP(161-180)
Cat. No. : RP11841
Not. No. : PE0821711
Sample ID : U6515CK130-1
Theoretical MW : 2209.51
Observed MW : 2209.50

Interface : ESI
Nebulizing Gas Flow : 1.5L/min
CDL Temp : 250°C
Block Temp : 200°C

Interface Bias : +4.5 kV
Drying Gas Flow : 5 L/min
T.Flow : 0.2 ml/min
B.conc : 50%H2O/50%MeOH