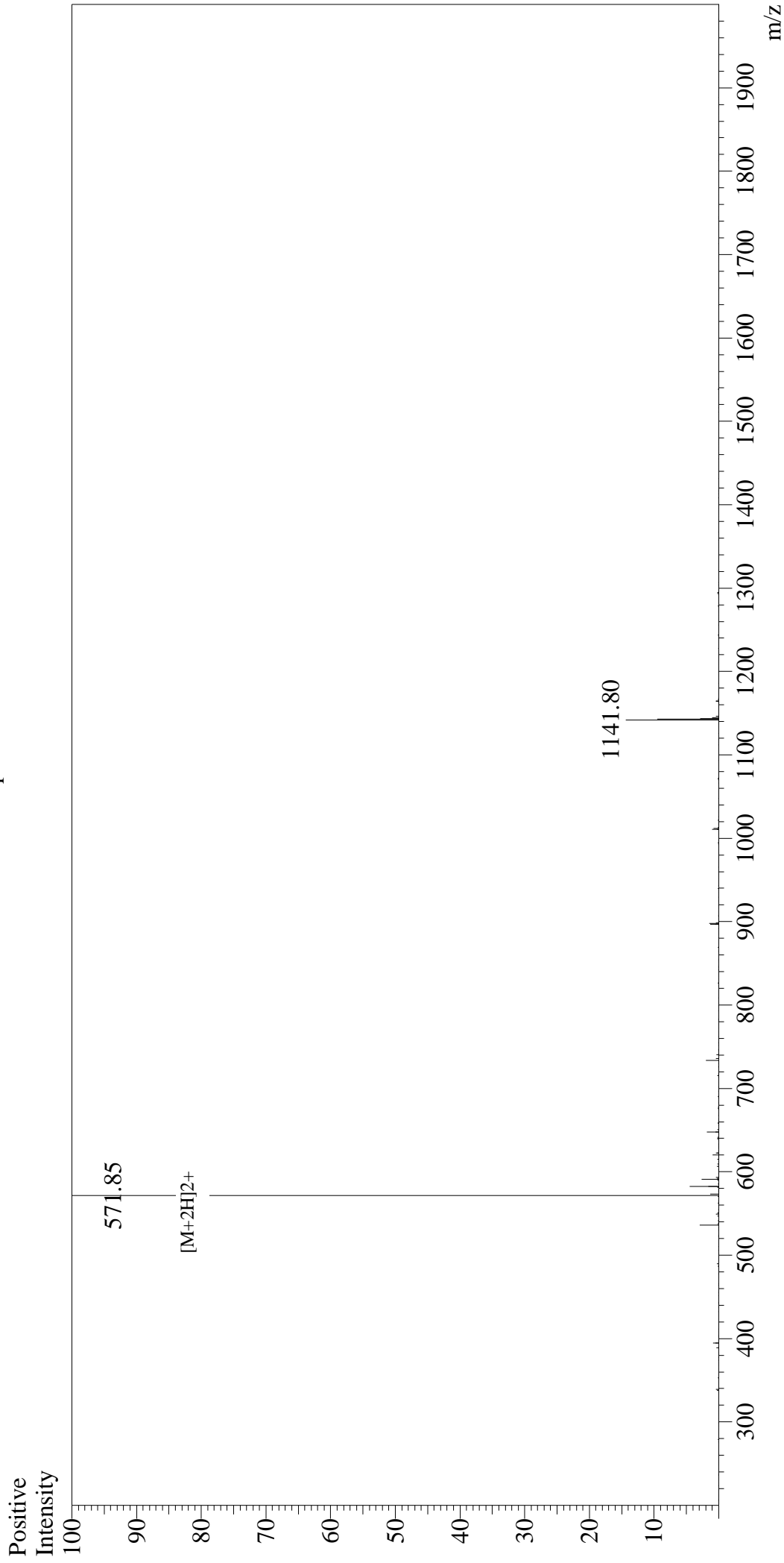


Mass Spectrum



Sample Information

User : Gary
Month-Day Processed : 10/30/17
Time Processed : 16:51:54
Injection Volume : 0.2
Sample Name : Small Cardioactive Peptide B (SCPB)
Cat No. : RPI0717
Lot No. : PE6941710
Theoretical MW : 1141.40
Observed MW : 1141.70

Interface : ESI
Nebulizing Gas Flow : 1.5L/min
CDL Temp : 250°C
Block Temp : 200°C

Interface Bias : +4.5kV
Drying Gas Flow : 5 L/min
T.Flow : 0.2ml/min
B.conc : 50%H2O/50%MeOH