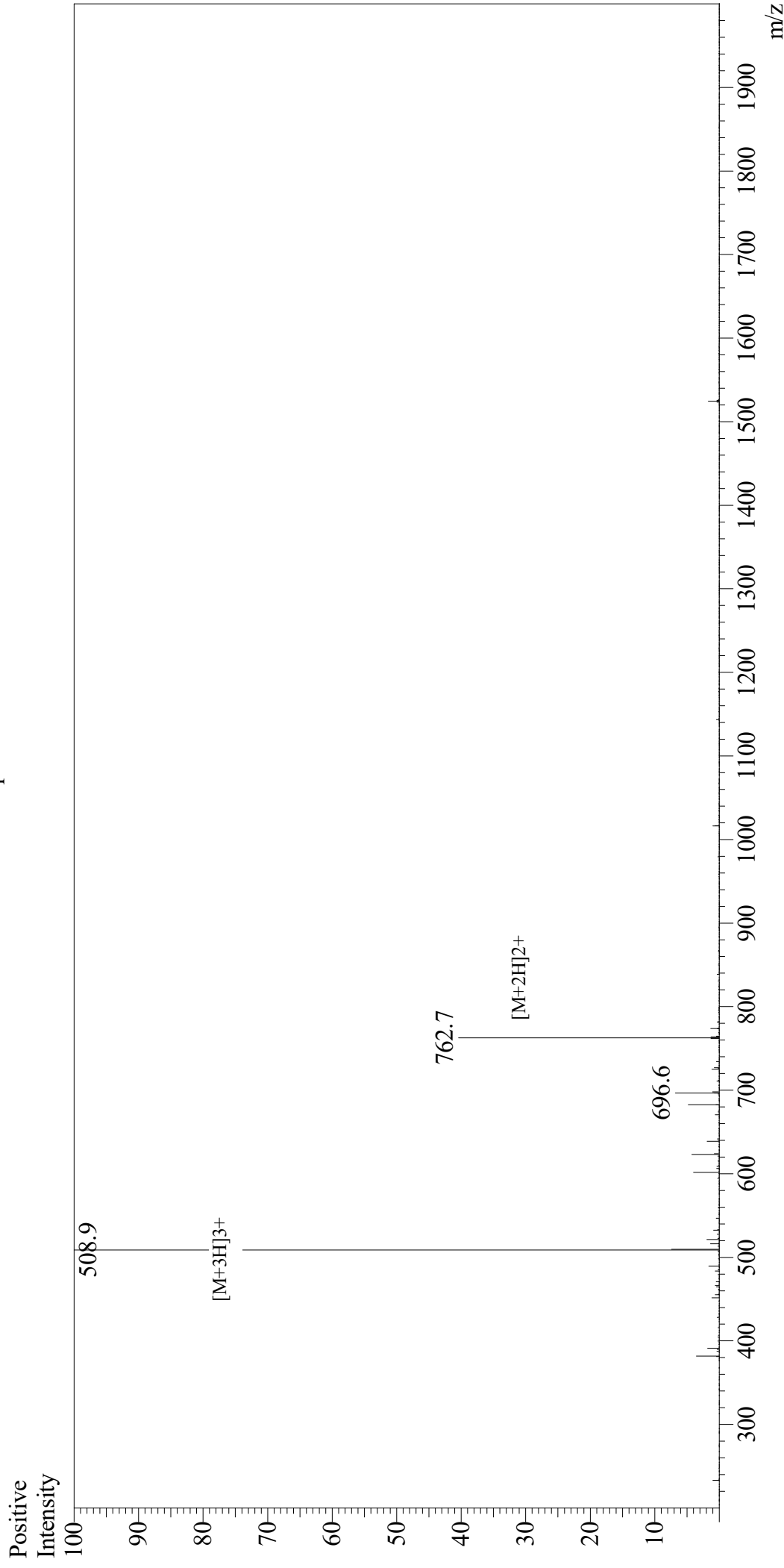


# Mass Spectrum



## Sample Information

User : Gary  
Month-Day Processed : 03/14/19  
Time Processed : 04:28:29 PM  
Injection Volume : 0.3  
Sample Name : Osteogenic Growth Peptide, OGP  
Cat No. : RP20311  
Lot No. : PE1921903  
Theoretical MW : 1523.76  
Observed MW : 1523.7

Interface : ESI  
Nebulizing Gas Flow : 1.5L/min  
CDL Temp : 250  
Block Temp : 200

Equipment : GK11010007  
Interface Bias : +4.5kV  
Drying Gas Flow : 5 L/min  
T.Flow : 0.2ml/min  
B.conc : 50%H2O/50%MeOH