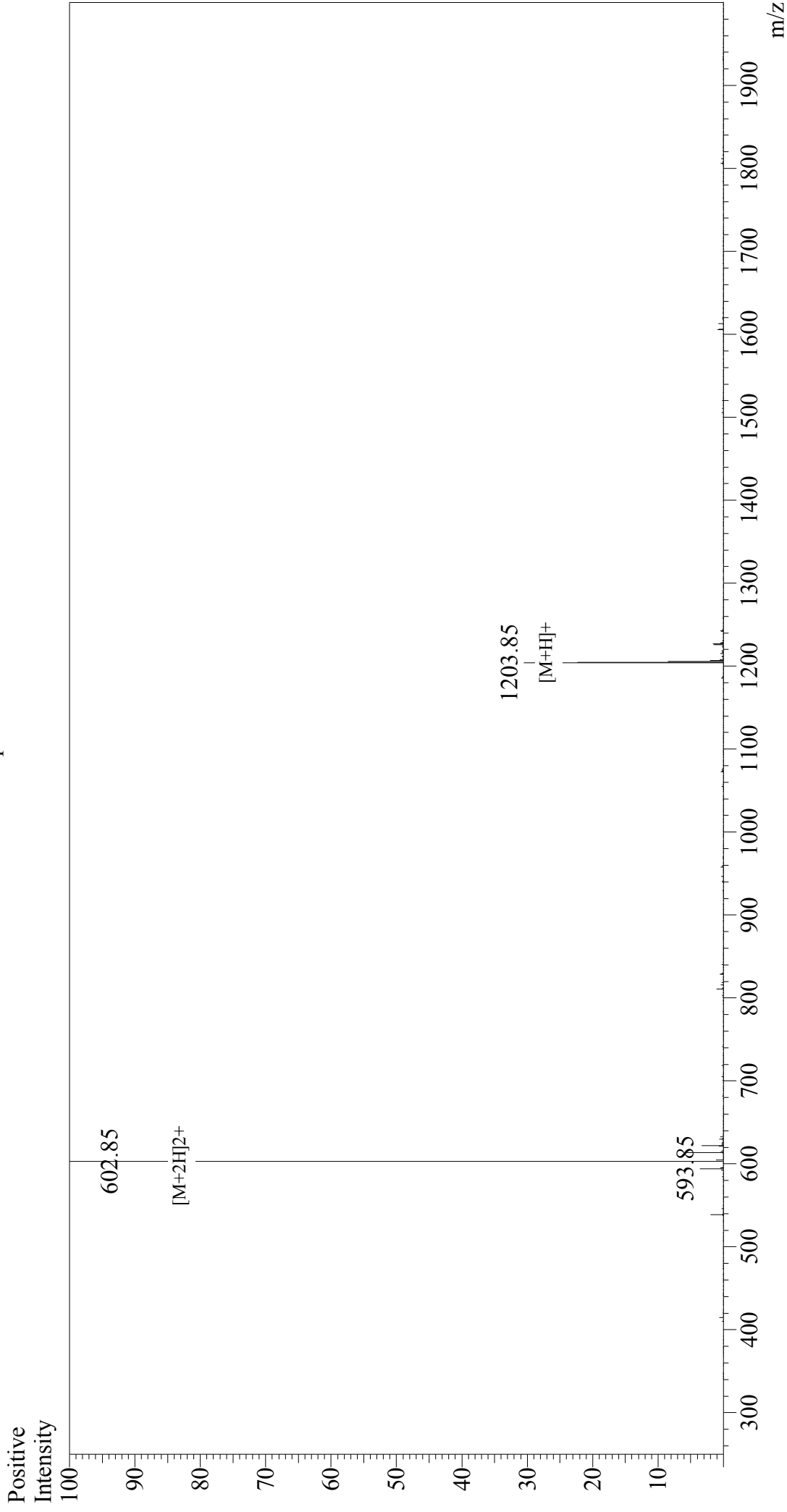


Mass Spectrum



Sample Information

Acquired by : Gary
Month-Day Processed : 12/02/17
Time Processed : 9:01:50
Injection Volume : 0.2
Sample Name : c-Myc Peptide
Cat. No. : RP11731
Lot. No. : PE3671711
Theoretical MW : 1203.30
Observed MW : 1203.70

Interface : ESI
Nebulizing Gas Flow : 1.5L/min
CDL Temp : 250°C
Block Temp : 200°C

Interface Bias : +4.5 kV
Drying Gas Flow : 5 L/min
T.Flow : 0.2 ml/min
B.conc : 50% H_2O /50% $MeOH$