

Sample Name :Carcinoembryonic Antigen (CEA)  
 Cat No. :RP20328  
 Lot No. :E2734720K  
 Time Processed :11:22:48  
 Month-Day-Year Processed :11/29/2020

Pump A : 0.065% trifluoroacetic in 100% water (v/v)  
 Pump B : 0.05% trifluoroacetic in 100% acetonitrile (v/v)  
 Total Flow:1 ml/min  
 Wavelength:220 nm

<<LC Time Program>>

Time	Module	Command	Value
0.01	Pumps	Solvent B Conc.	5
25.00	Pumps	Solvent B Conc.	65
25.01	Pumps	Solvent B Conc.	95
27.00	Pumps	Solvent B Conc.	95
27.01	Pumps	Solvent B Conc.	5
33.00	Pumps	Solvent B Conc.	5
33.01	Controller	Stop	

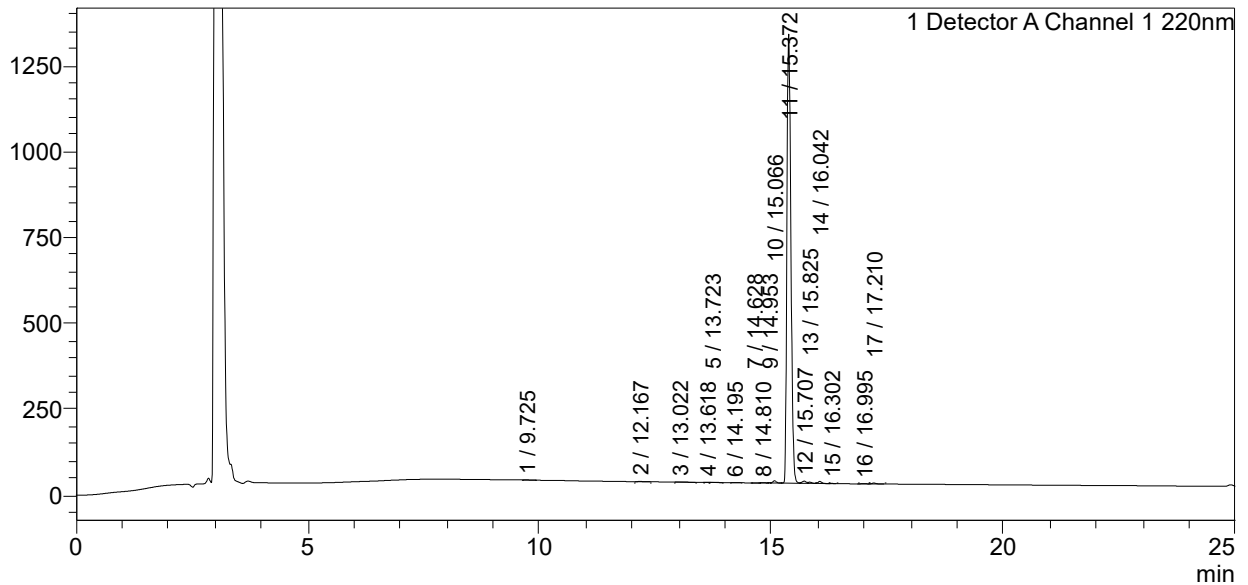
<<Column Performance>>

<Detector A>

Column : Inertsil ODS-3 4.6 x 250 mm  
 Equipment:ZJ17010507

### <Chromatogram>

mV



### <Peak Table>

Detector A Channel 1 220nm

Peak#	Ret. Time	Area	Height	Area%
1	9.725	3081	615	0.038
2	12.167	7650	1114	0.095
3	13.022	3961	624	0.049
4	13.618	3440	705	0.043
5	13.723	5798	704	0.072
6	14.195	2003	314	0.025
7	14.628	1212	270	0.015
8	14.810	7493	1258	0.093
9	14.953	5119	1171	0.064
10	15.066	35844	6593	0.445
11	15.372	7868894	1307602	97.696
12	15.707	38666	6049	0.480
13	15.825	16454	3444	0.204
14	16.042	31230	5938	0.388
15	16.302	2457	535	0.031

Peak#	Ret. Time	Area	Height	Area%
16	16.995	5878	1063	0.073
17	17.210	15323	2610	0.190
Total		8054503	1340610	100.000