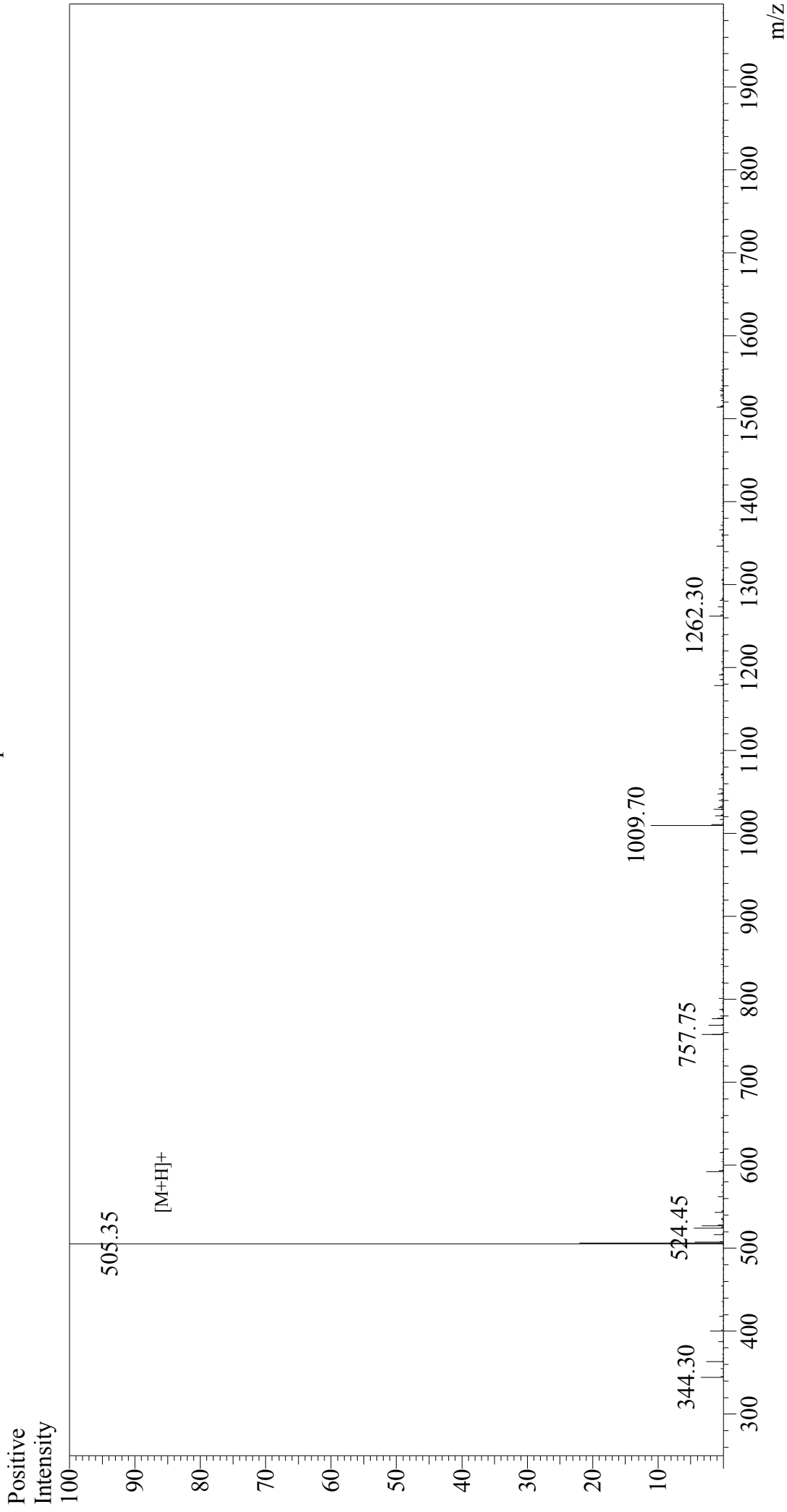


Mass Spectrum



Sample Information

Acquired by : Gary
Month-Day Processed : 12/29/17
Time Processed : 16:16:47
Injection Volume : 0.2
Sample Name : Fibronectin Active Fragment Control
Cat. No. : RP20347
Lot. No. : PE6571712
Theoretical MW : 504.50
Observed MW : 504.35

Interface : ESI
Nebulizing Gas Flow : 1.5L/min
CDL Temp : 250°C
Block Temp : 200°C

Interface Bias : +4.5 kV
Drying Gas Flow : 5 L/min
T.Flow : 0.2 ml/min
B.conc : 50% H₂O/50% MeOH