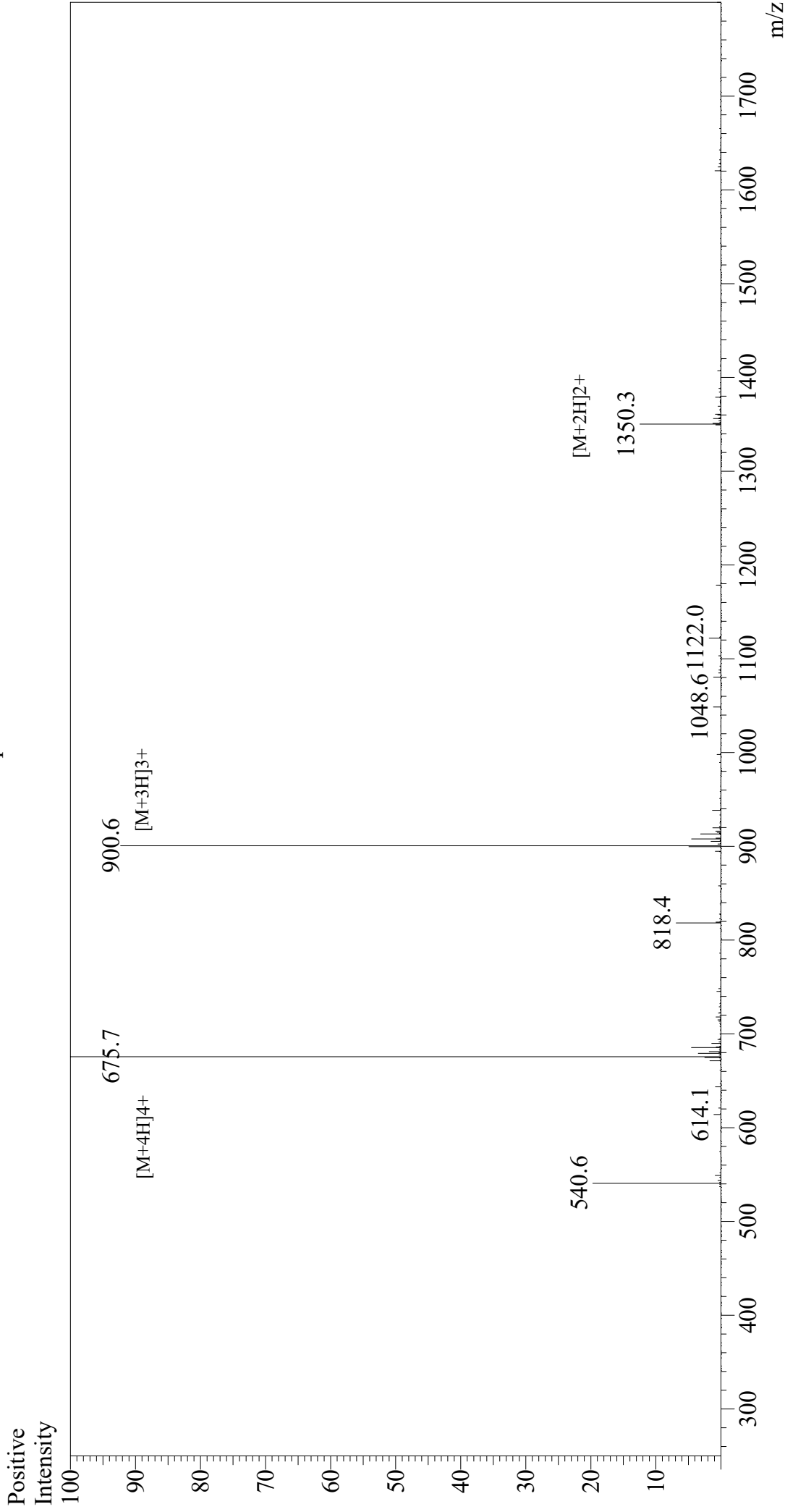


# Mass Spectrum



Sample Information  
Acquired by : Gary  
Month-Day Processed : 10/02/18  
Time Processed : Injection 17:12:20  
Volume : 0.2  
Sample Name : Motilin, human, porcine  
Cat. No. : RP10527  
Lot. No. : PE7601809  
Theoretical MW : 2699.05  
Observed MW : 2698.8

Interface : ESI  
Nebulizing Gas Flow : 1.5L/min  
CDL Temp : 250°C  
Block Temp : 200°C

Equipment : GK11010007  
Interface Bias : +4.5 kV  
Drying Gas Flow : 5 L/min  
T.Flow : 0.2 ml/min  
B.conc : 50%H2O/50%MeOH