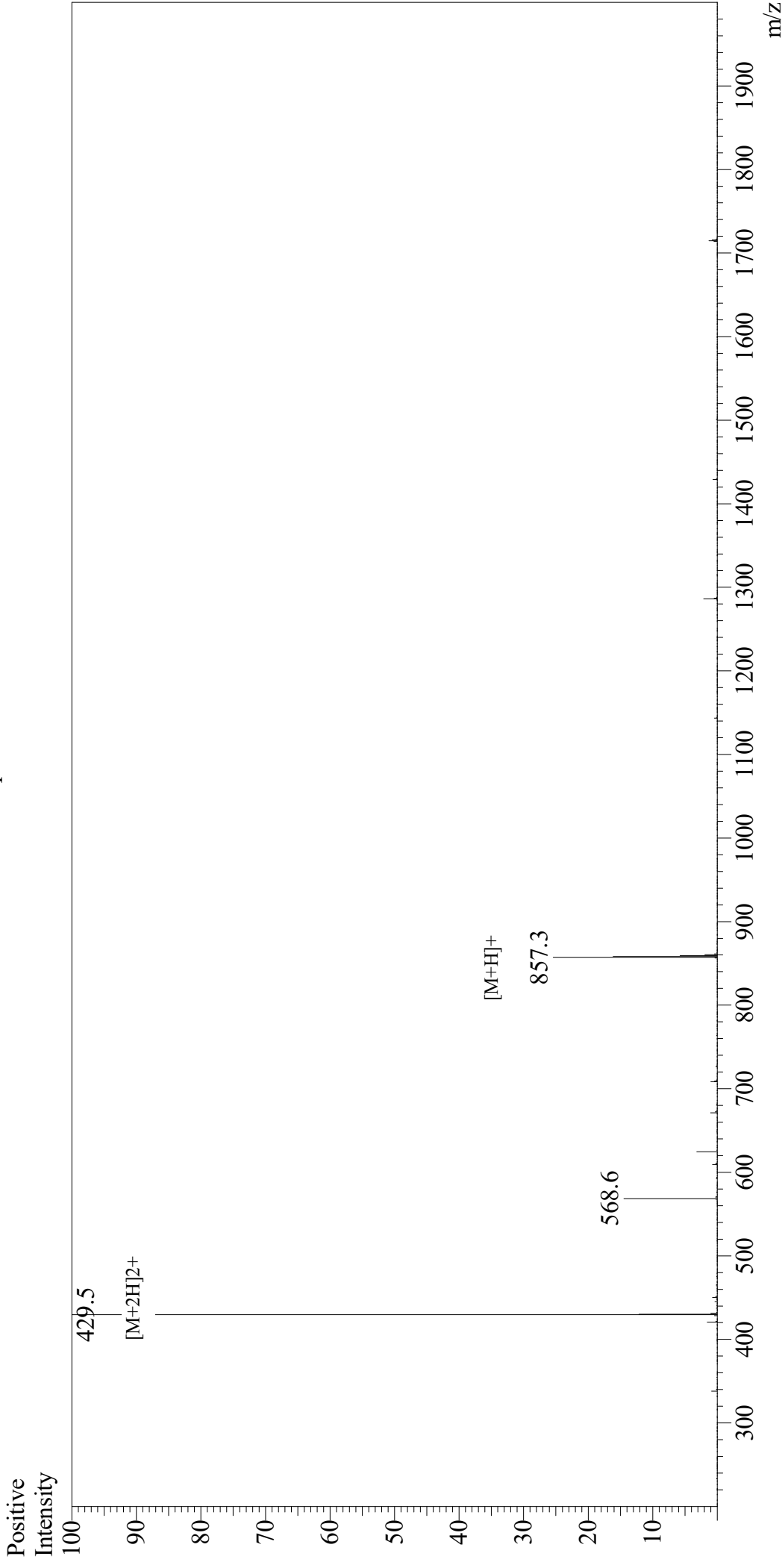


Mass Spectrum



Sample Information

User :	Gary	Equipment	: GK11010007
Month-Day Processed :	09/15/19	Interface Bias	: +4.5kV
Time Processed :	08:36:52 PM	Drying Gas Flow	: 5 L/min
Injection Volume :	0.4	T.Flow	: 0.2ml/min
Sample Name :	W Peptide, WKYMVm	B.conc	: 50% H ₂ O/50% MeOH
Cat No. :	RP20299		
Lot No. :	E0510119I		
Theoretical MW :	857.10		
Observed MW :	857.0		