

Sample Name :Urotensin II, human  
 Cat No. :RP10096  
 Lot No. :E6971019J  
 Time Processed :9:26:45 AM  
 Month-Day-Year Processed :10/15/2019

Pump A : 0.065% trifluoroacetic in 100% water (v/v)  
 Pump B : 0.05% trifluoroacetic in 100% acetonitrile (v/v)  
 Total Flow:1 ml/min  
 Wavelength:220 nm

<<LC Time Program>>

Time	Module	Command	Value
0.01	Pumps	Solvent B Conc.	5
25.00	Pumps	Solvent B Conc.	65
25.01	Pumps	Solvent B Conc.	95
32.00	Pumps	Solvent B Conc.	95
32.01	Pumps	Solvent B Conc.	5
41.00	Pumps	Solvent B Conc.	5
41.01	Controller	Stop	

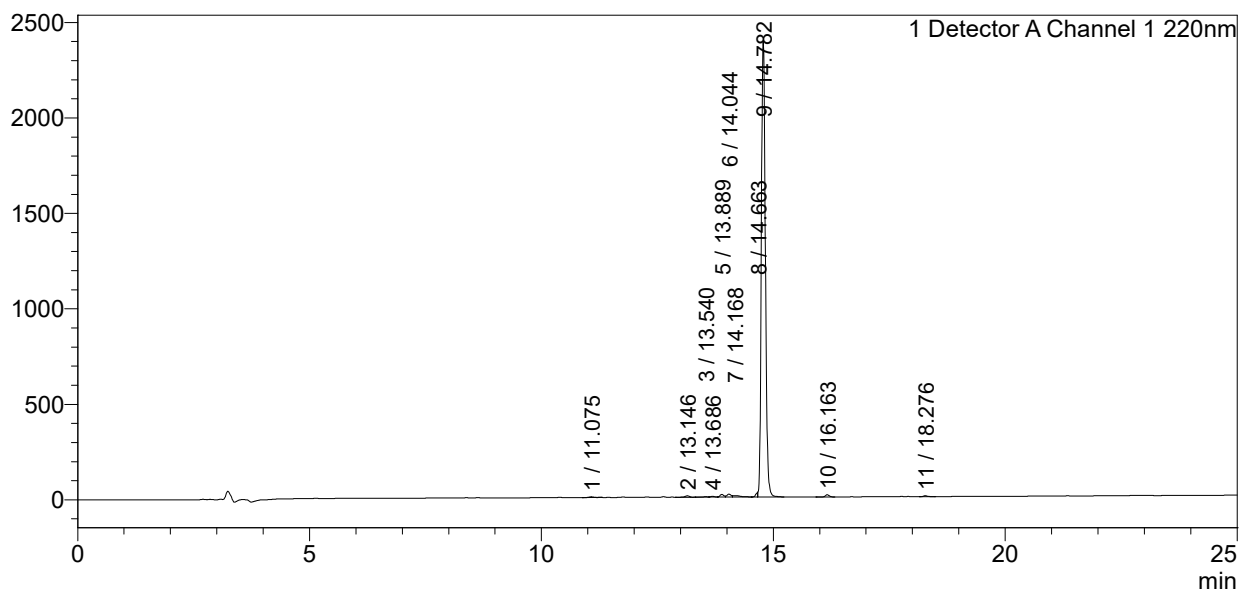
<<Column Performance>>

<Detector A>

Column : AlltimaTM C18 4.6 x 250 mm  
 Equipment:ZJ19010141

### <Chromatogram>

mV



### <Peak Table>

Detector A Channel 1 220nm

Peak#	Ret. Time	Area	Height	Area%
1	11.075	23686	3694	0.159
2	13.146	48769	7083	0.327
3	13.540	20390	2369	0.137
4	13.686	23248	3871	0.156
5	13.889	80729	13901	0.541
6	14.044	92197	15555	0.618
7	14.168	88565	7601	0.594
8	14.663	76895	22437	0.516
9	14.782	14360489	2388486	96.323
10	16.163	68126	12087	0.457
11	18.276	25660	4574	0.172
Total		14908753	2481659	100.000