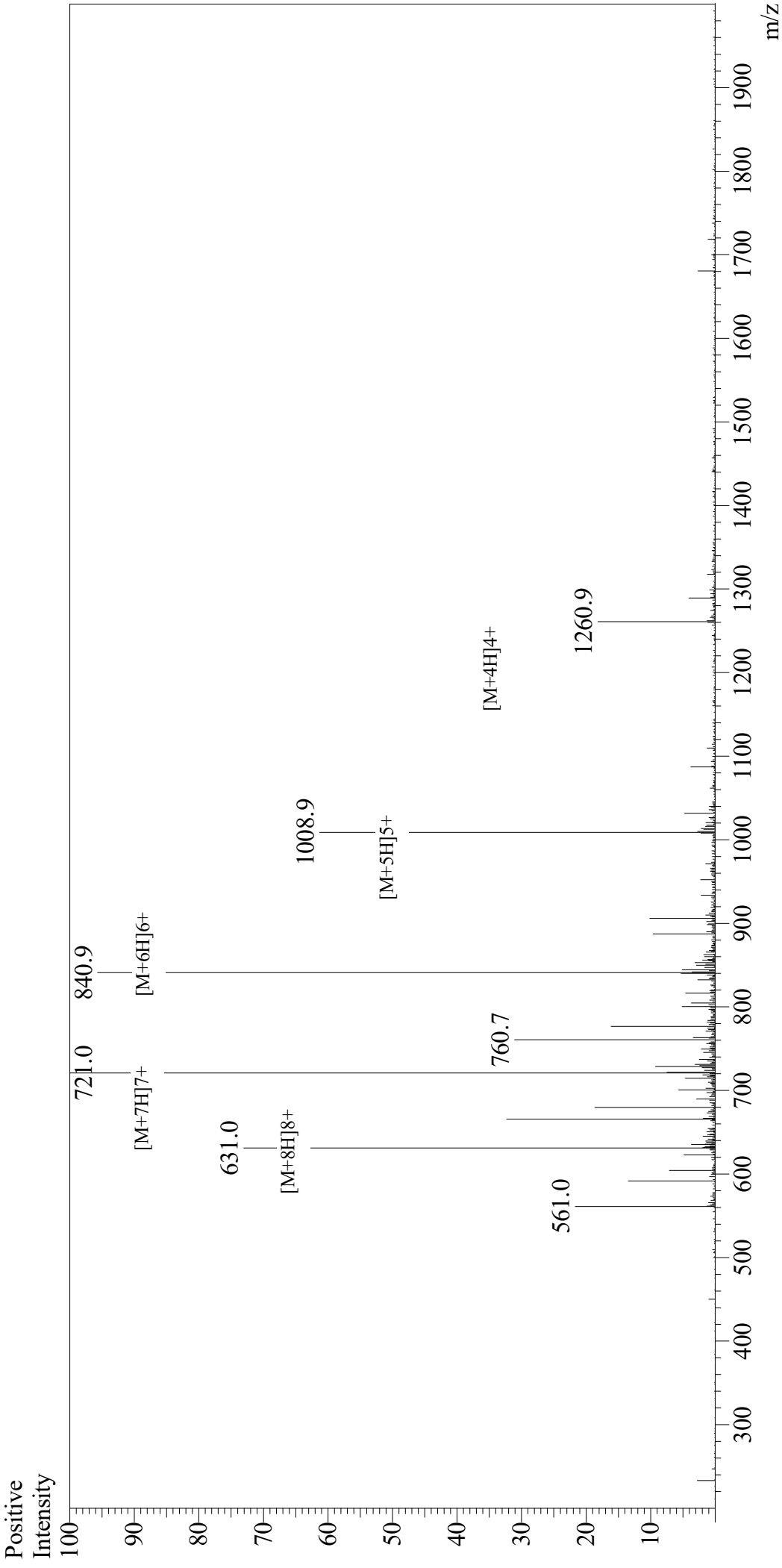


# Mass Spectrum



Equipment : GK11010007  
 Interface Bias : +4.5kV  
 Drying Gas Flow : 5 L/min  
 T.Flow : 0.2ml/min  
 B.conc : 50%H2O/50%MeOH

Interface : ESI  
 Nebulizing Gas Flow : 1.5L/min  
 CDL Temp : 250  
 Block Temp : 200

Sample Information  
 User : Gary  
 Month-Day Processed : 09/18/19  
 Time Processed : 02:54:51 PM  
 Injection Volume : 0.3  
 Sample Name : Growth Hormone Releasing Factor (GHRF) (1-44), human  
 Cat No. : RP10734

Lot No. : E4758819I  
 Theoretical MW : 5039.80  
 Observed MW : 5040.0