

Sample Name :Atrial Natriuretic Peptide (ANP) (1-28), rat

Cat. No. : RP11195

Lot. No. : PE5401808

Pump A : 0.065% trifluoroacetic in 100% water (v/v)

Pump B : 0.05% trifluoroacetic in 100% acetonitrile (v/v)

Total Flow:1 ml/min

Wavelength:220 nm

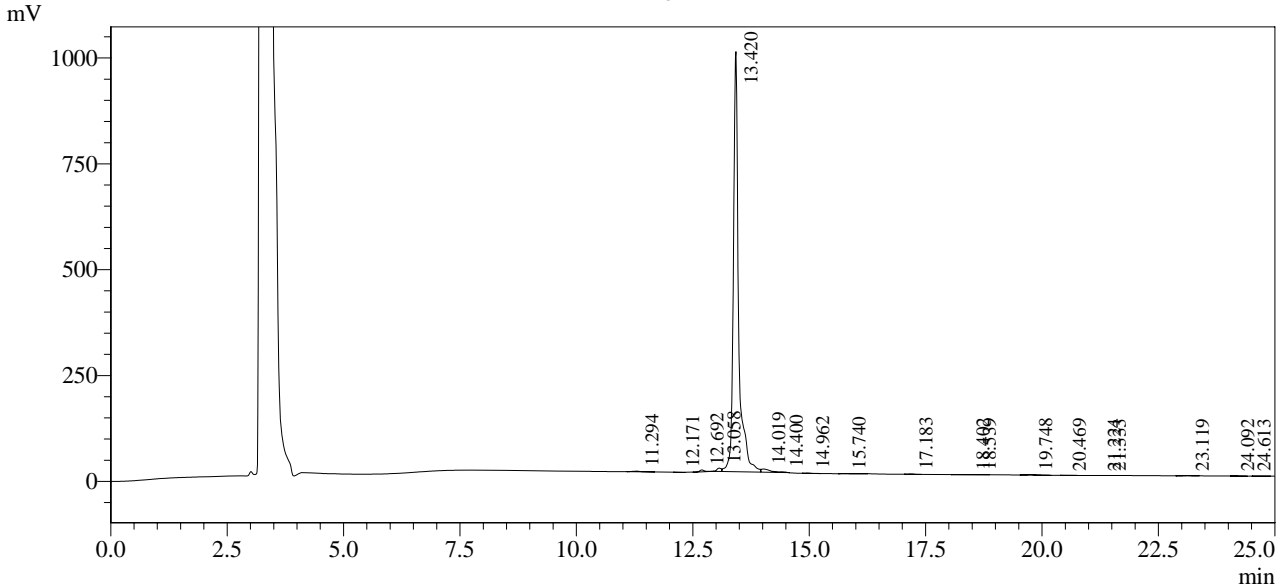
| Time | Unit | Command | Value | Comment |
|-------|------------|--------------|-------|---------|
| 0.01 | Pumps | Pump B Conc. | 5 | |
| 25.00 | Pumps | Pump B Conc. | 65 | |
| 25.01 | Pumps | Pump B Conc. | 95 | |
| 27.00 | Pumps | Pump B Conc. | 95 | |
| 27.01 | Pumps | Pump B Conc. | 5 | |
| 35.00 | Pumps | Pump B Conc. | 5 | |
| 35.01 | Controller | Stop | | |

<<Column Performance>>

<Detector A>

Column : Inertsil ODS-3 4.6 x 250 mm

Chromatogram



1 Det.A Ch1 / 220nm

Peak Table

Detector A Ch1 220nm

| Peak# | Ret. Time | Area | Height | Area % |
|-------|-----------|---------|---------|---------|
| 1 | 11.294 | 17818 | 1477 | 0.220 |
| 2 | 12.171 | 4097 | 742 | 0.051 |
| 3 | 12.692 | 35219 | 4609 | 0.435 |
| 4 | 13.058 | 52299 | 7977 | 0.646 |
| 5 | 13.420 | 7799399 | 991963 | 96.379 |
| 6 | 14.019 | 101154 | 7594 | 1.250 |
| 7 | 14.400 | 15688 | 1858 | 0.194 |
| 8 | 14.962 | 4820 | 559 | 0.060 |
| 9 | 15.740 | 6777 | 527 | 0.084 |
| 10 | 17.183 | 5961 | 807 | 0.074 |
| 11 | 18.402 | 8373 | 492 | 0.103 |
| 12 | 18.539 | 6409 | 529 | 0.079 |
| 13 | 19.748 | 18852 | 1428 | 0.233 |
| 14 | 20.469 | 2600 | 187 | 0.032 |
| 15 | 21.224 | 1037 | 126 | 0.013 |
| 16 | 21.333 | 1010 | 122 | 0.012 |
| 17 | 23.119 | 7771 | 719 | 0.096 |
| 18 | 24.092 | 1140 | 77 | 0.014 |
| 19 | 24.613 | 1993 | 151 | 0.025 |
| Total | | 8092417 | 1021944 | 100.000 |