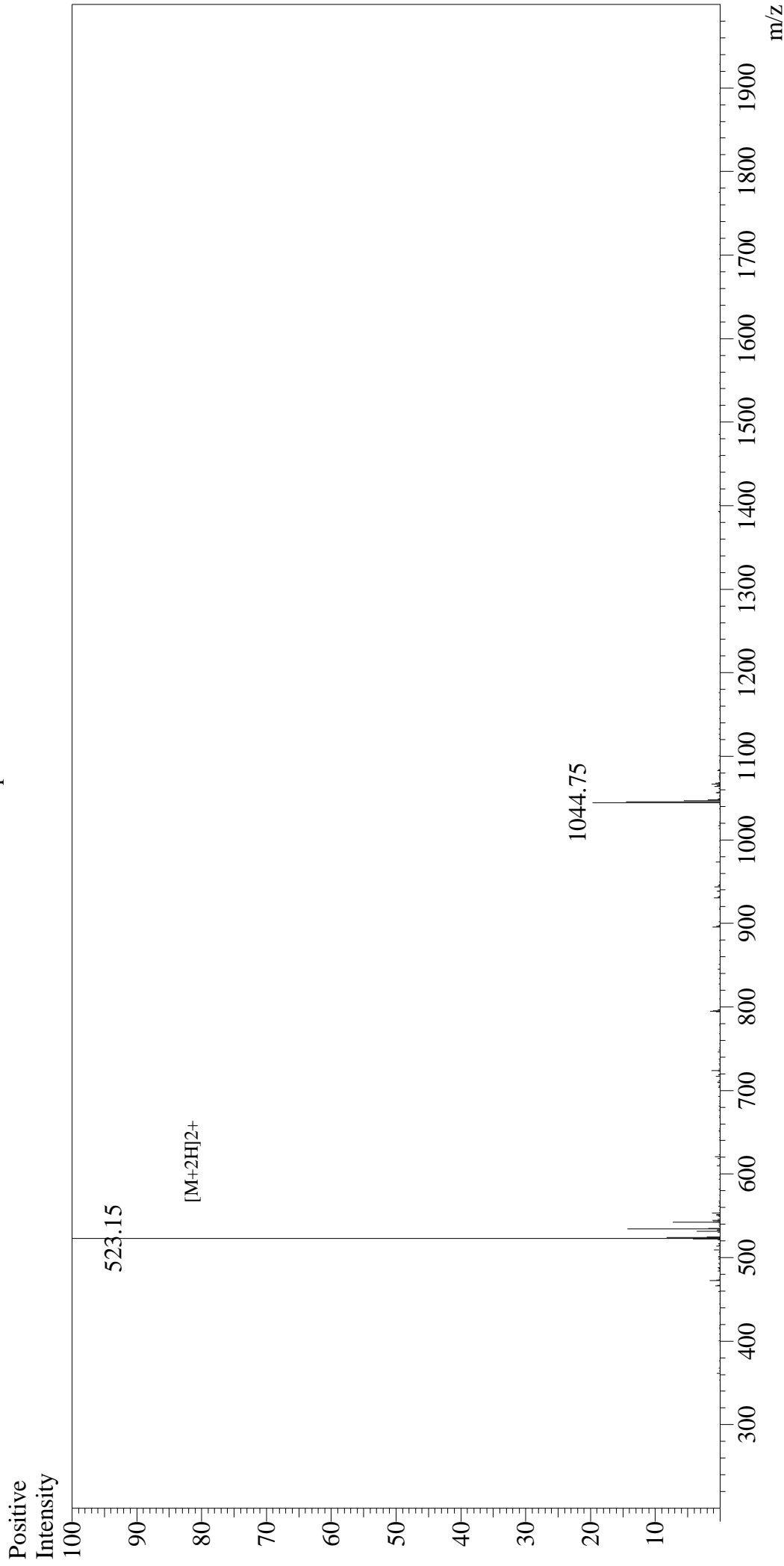


Mass Spectrum



Sample Information

User : Gary
Month-Day Processed : 02/11/18
Time Processed : 19:04:51
Injection Volume : 0.2
Sample Name : LCMV_gp33-41
Cat No. : RP20257
Lot No. : PE5871802
Theoretical MW : 1044.25
Observed MW : 1044.30

Interface : ESI
Nebulizing Gas Flow : 1.5L/min
CDL Temp : 250°C
Block Temp : 200°C

Interface Bias : +4.5kV
Drying Gas Flow : 5 L/min
T.Flow : 0.2ml/min
B.conc : 50%H2O/50%MeOH