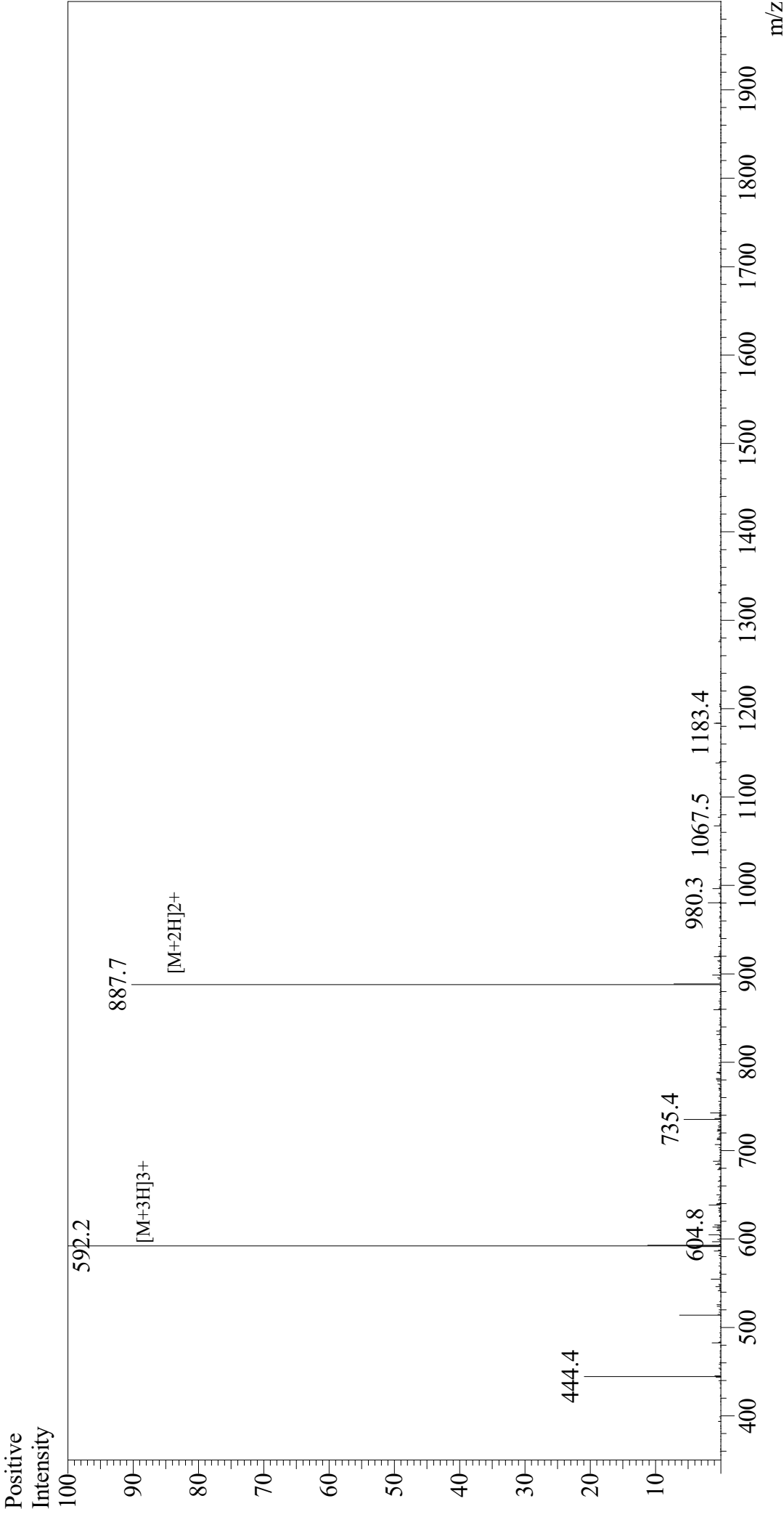


Mass Spectrum



Sample Information
 Month-Day Processed : 04/19/21
 Time Processed : 7:37:35
 Injection Volume : 0.4
 Sample Name : OVA Peptide (323-339)
 Cat. No. : RP10610
 Lot. No. : E3004921D
 Theoretical MW : 1773.91
 Observed MW : 1773.6

Interface : ESI
 Nebulizing Gas Flow : 1.5L/min
 CDL Temp : 250
 Block Temp : 200

Equipment : GK11010007
 Interface Bias : +4.5 kV
 Drying Gas Flow : 5 L/min
 T.Flow : 0.2 ml/min
 B.conc : 50% H2O/50% MeOH