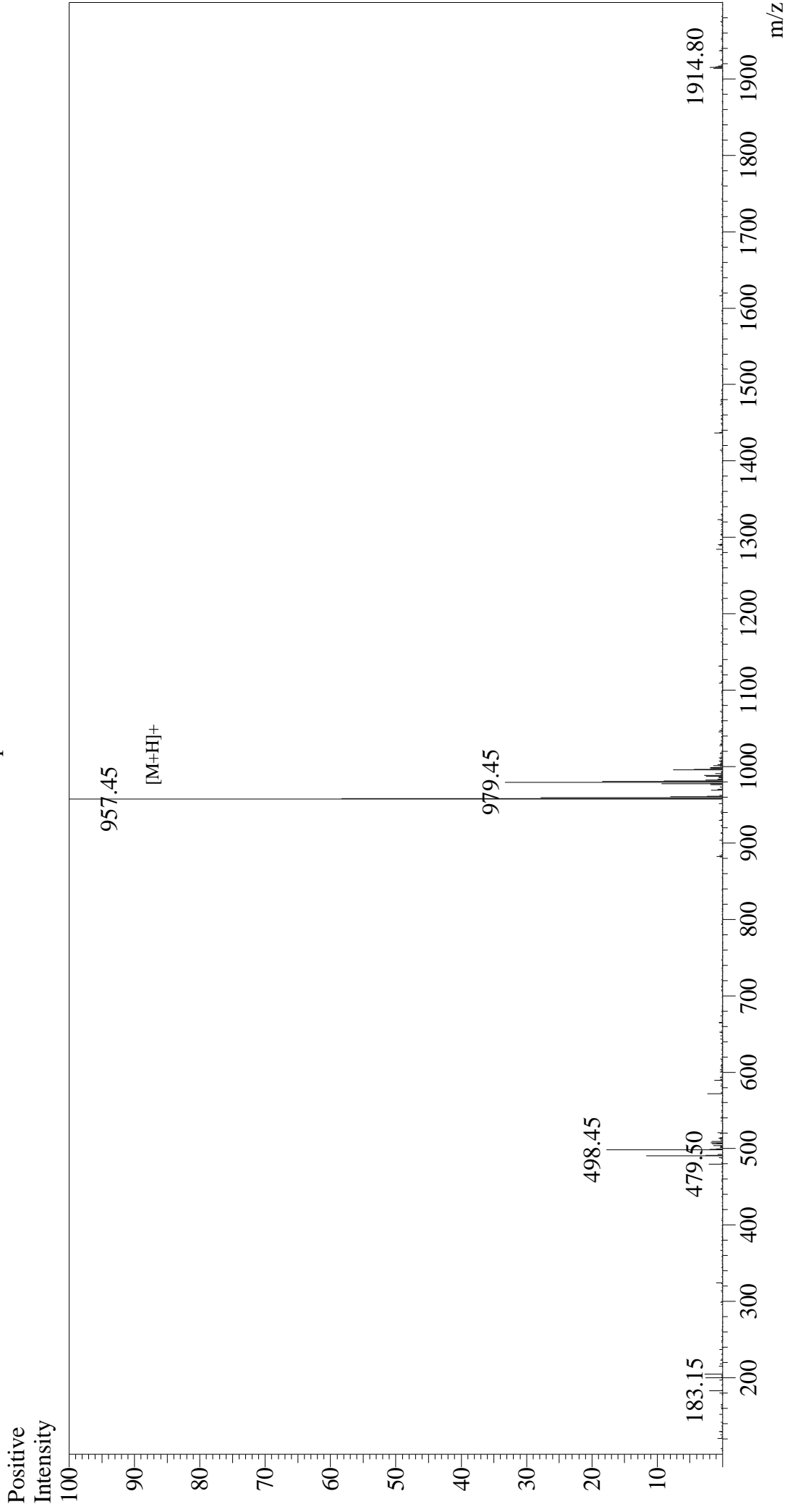


# Mass Spectrum



## Sample Information

Acquired by : Gary  
 Month-Day Processed : 05/26/17  
 Time Processed : 13:21:31  
 Injection Volume : 0.2  
 Sample Name : Crustacean Cardioactive Peptide (CCAP)  
 Cat No.: RP10572  
 Lot No.: PE2911705  
 Theoretical MW : 957.10  
 Observed MW : 956.45

Interface :ESI  
 Nebulizing Gas Flow :1.5L/min  
 CDL Temp :250°C  
 Block Temp :200°C

Interface Bias :+4.5 kV  
 Drying Gas Flow :5 L/min  
 T.Flow :0.2 ml/min  
 B.conc :50%H2O/50%MeOH