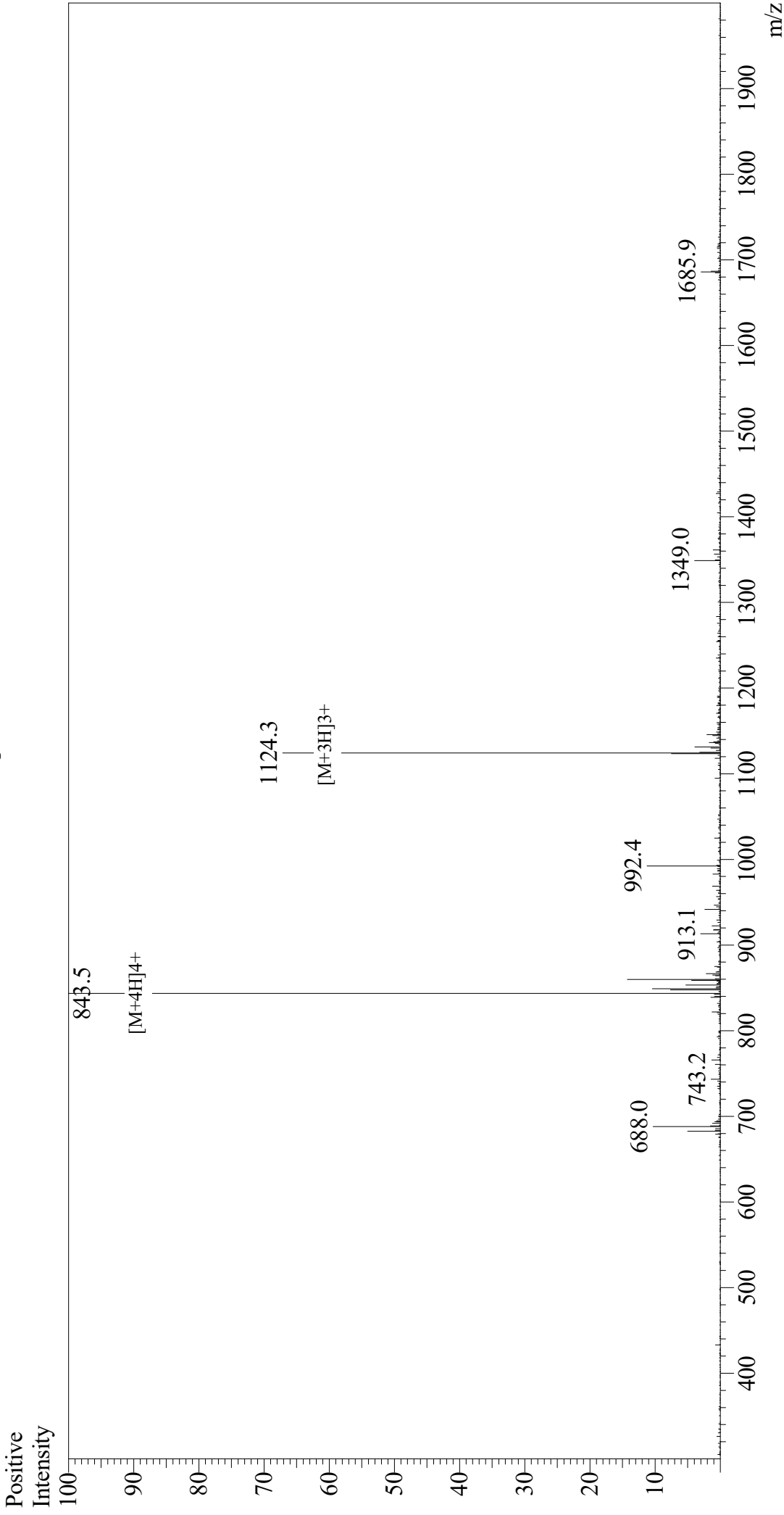


# Mass Spectrum



## Sample Information

Acquired by: Gary  
 Month-Day Processed: 08/14/19  
 Time Processed: 11:26:34 AM  
 Injection Volume: 0.3  
 Sample Name: Exendin (9-39)  
 Cat. No.: RP10872  
 Lot. No.: E8575819H  
 Theoretical MW: 3369.76  
 Observed MW: 3370.0

Interface: ESI  
 Nebulizing Gas Flow: 1.5L/min  
 CDL Temp: 250  
 Block Temp: 200

Equipment: GK11010007  
 Interface Bias: +4.5 kV  
 Drying Gas Flow: 5 L/min  
 T.Flow: 0.2 ml/min  
 B.conc: 50% H2O/50% MeOH