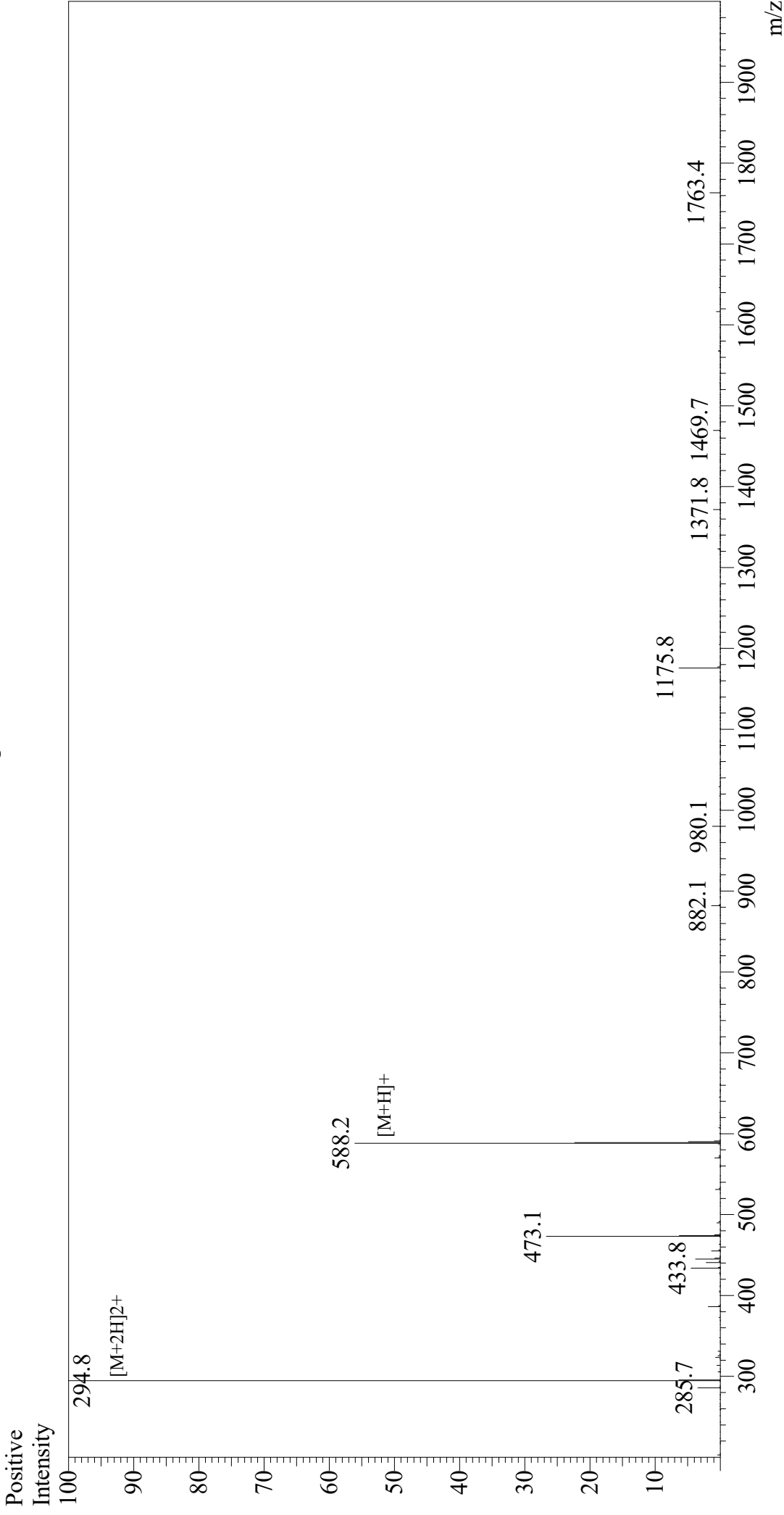


# Mass Spectrum



Sample Information  
Month-Day Processed : 10/05/20  
Time Processed : 05:43:20 PM  
Injection Volume : 0.4  
Sample Name : GRGDSP  
Cat. No. : RP20255  
Lot. No. : E35238201  
Theoretical MW : 587.59  
Observed MW : 587.6

Interface : ESI  
Nebulizing Gas Flow : 1.5L/min  
CDL Temp : 250  
Block Temp : 200  
Equipment : GK11010007  
Interface Bias : +4.5 kV  
Drying Gas Flow : 5 L/min  
T.Flow : 0.2 ml/min  
B.conc : 50% H<sub>2</sub>O/50% MeOH