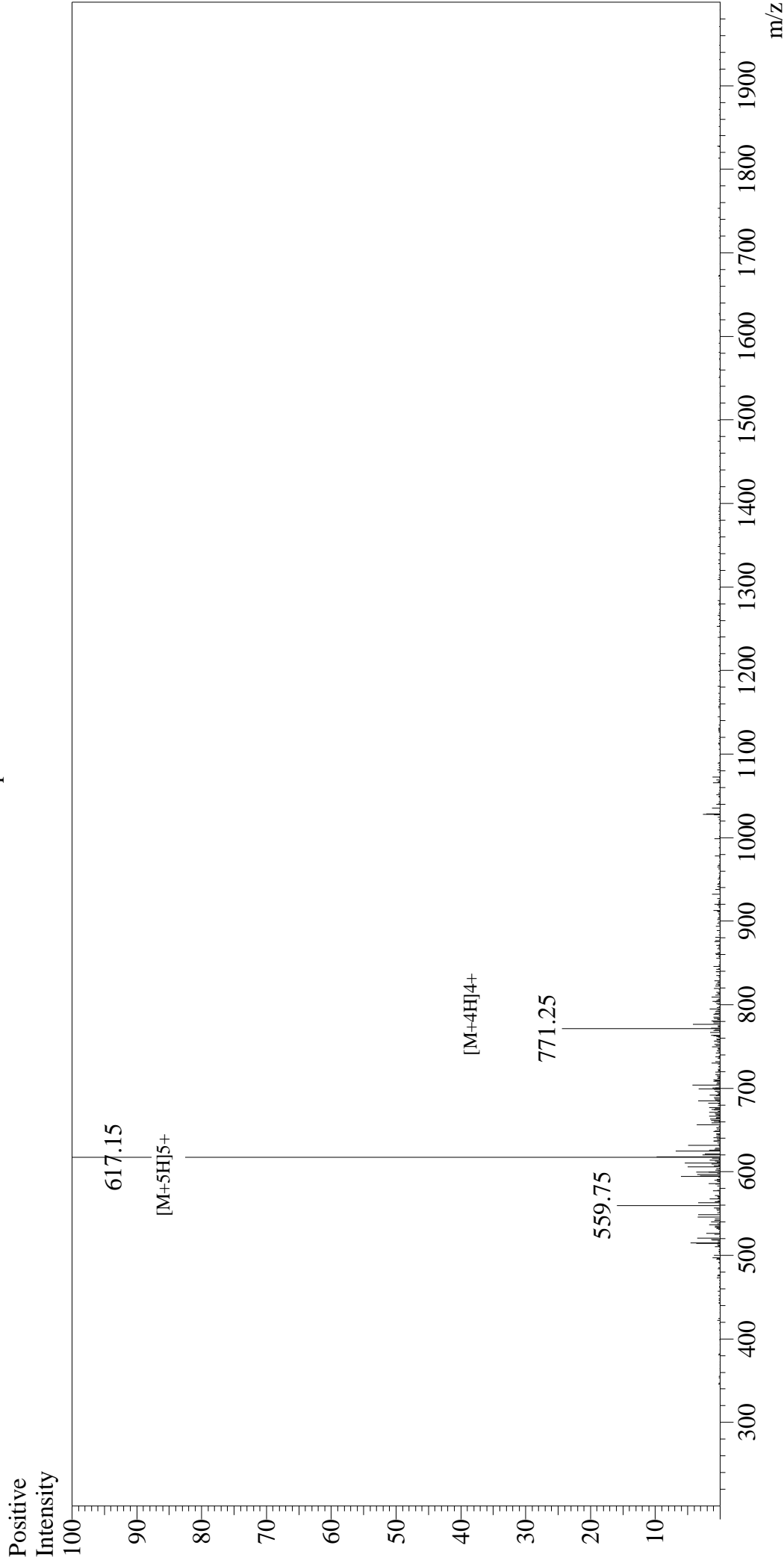


Mass Spectrum



Sample Information

User : Gary
Month-Day Processed : 07/17/18
Time Processed : 14:00:01
Injection Volume : 0.2
Sample Name : Atrial Natriuretic Peptide (ANP) (1-28), human, porcine
Cat No. : RPI1927
Lot No. : PE0091806
Theoretical MW : 3080.50
Observed MW : 3080.75

Interface : ESI
Nebulizing Gas Flow : 1.5L/min
CDL Temp : 250°C
Block Temp : 200°C

Interface Bias : +4.5kV
Drying Gas Flow : 5 L/min
T.Flow : 0.2ml/min
B.conc : 50%H2O/50%MeOH