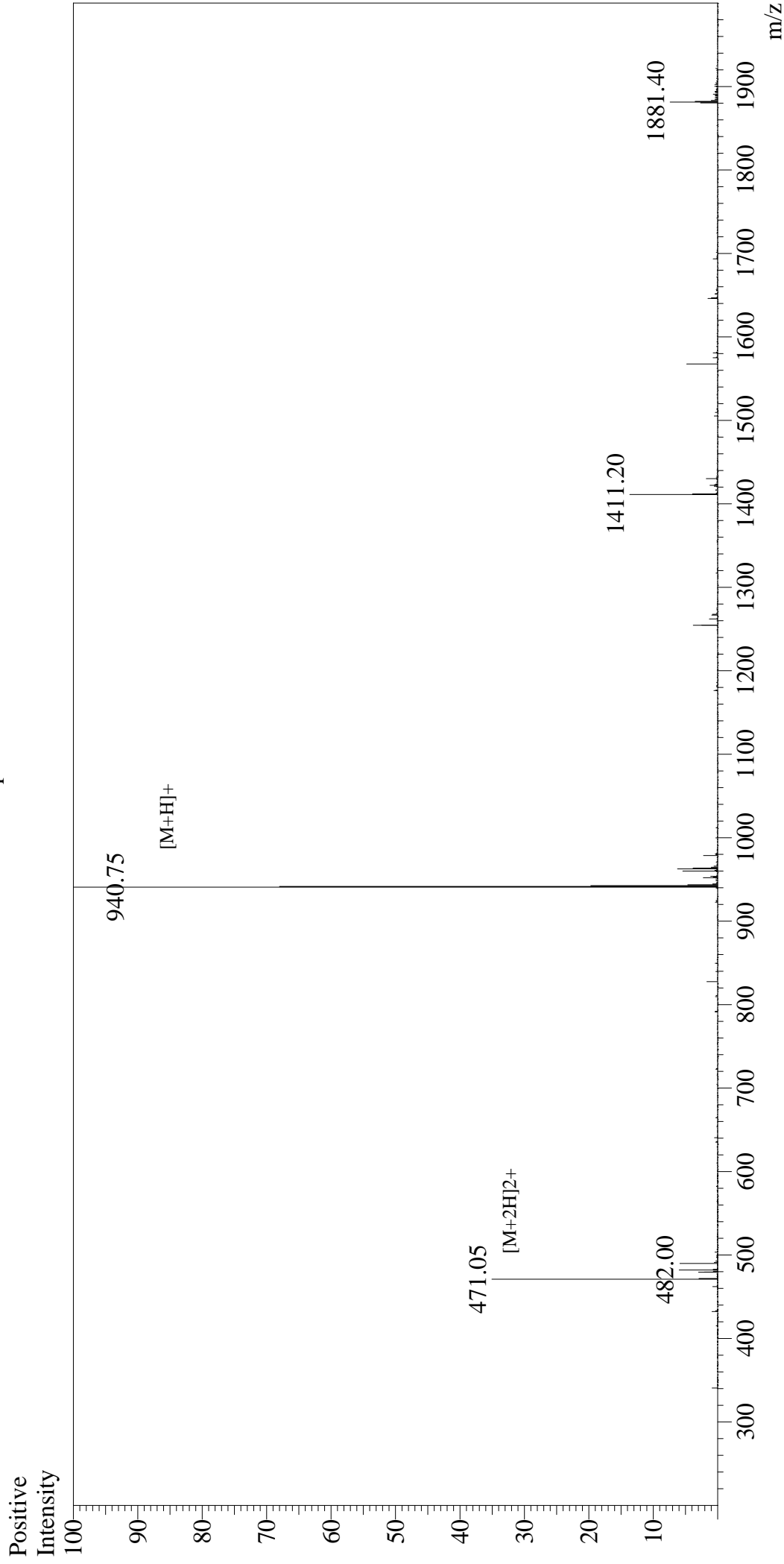


# Mass Spectrum



## Sample Information

User : Gary  
Month-Day Processed : 01/06/18  
Time Processed : 11:59:30  
Injection Volume : 0.2  
Sample Name : InfluenzaHA (518-526)  
Cat No. : RP20284  
Lot No. : PE7671801  
Theoretical MW : 940.05  
Observed MW : 939.75

## Interface

Interface : ESI  
Nebulizing Gas Flow : 1.5L/min  
CDL Temp : 250°C  
Block Temp : 200°C

## Interface Bias

Interface Bias : +4.5kV  
Drying Gas Flow : 5 L/min  
T.Flow : 0.2ml/min  
B.conc : 50%H2O/50%MeOH