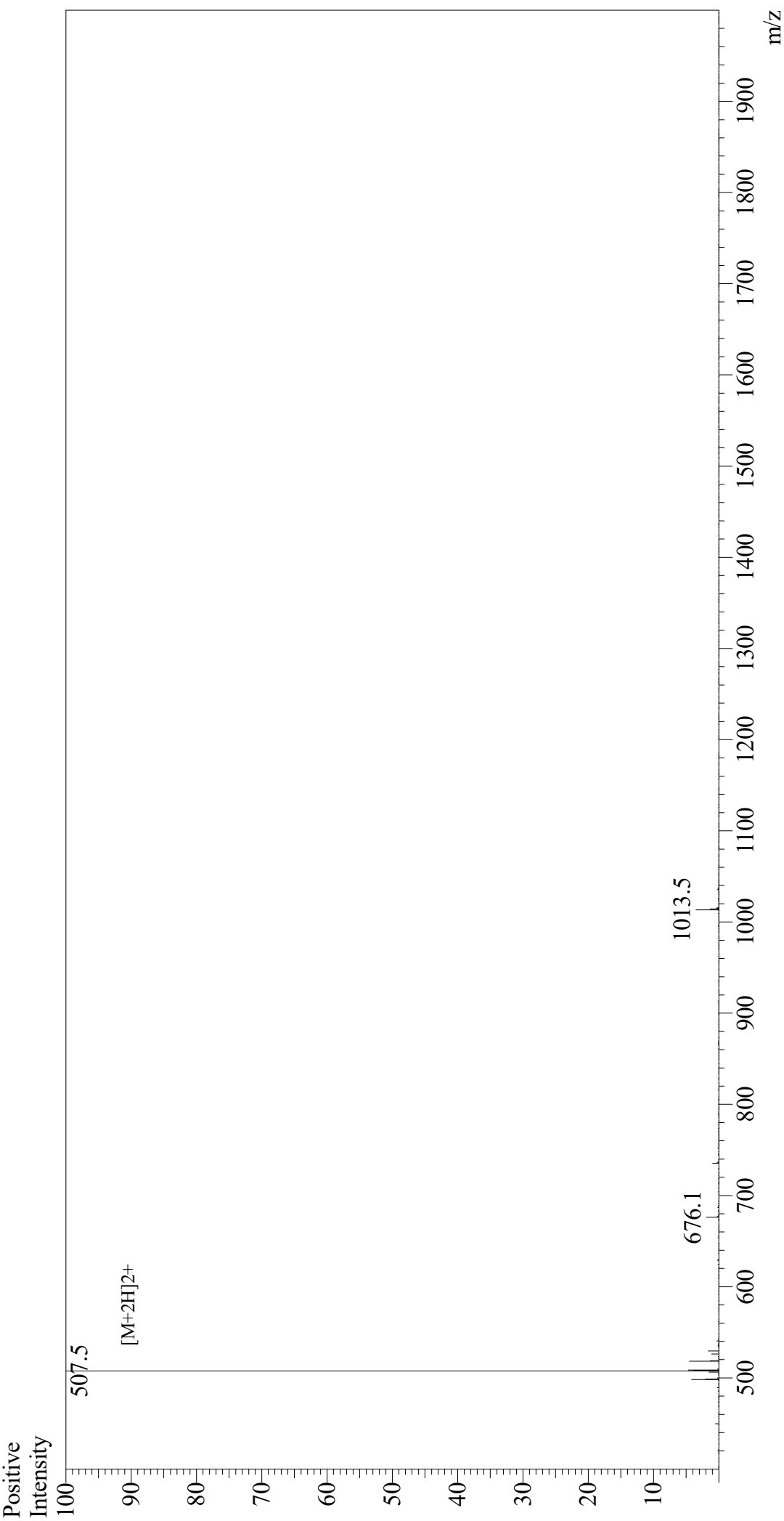


Mass Spectrum



Sample Information
Month-Day Processed : 09/17/21
Time Processed : 7:54:10
Injection Volume : 0.2
Sample Name : DYKDDDDK Peptide
Cat No. : RP10586
Lot No. : E1673821I
Theoretical MW : 1012.97
Observed MW : 1013.0

Interface : ESI
Nebulizing Gas Flow : 1.5L/min
CDL Temp : 250
Block Temp : 200
Equipment : ZJ21010035
Interface Bias : +4.5 kV
Drying Gas Flow : 5 L/min
T.Flow : 0.2 ml/min
B.conc : 50%H2O/50%MeOH