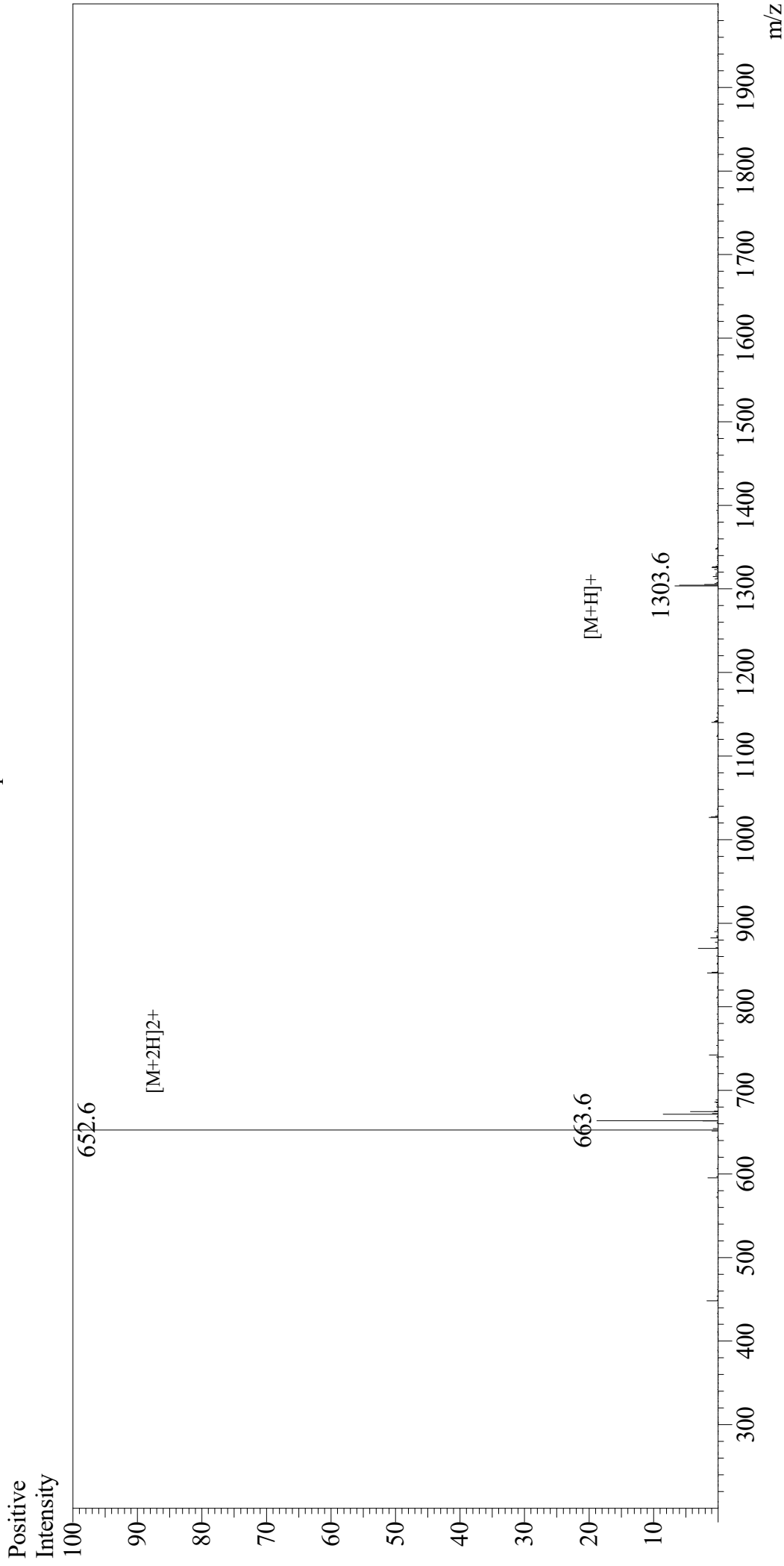


Mass Spectrum



Sample Information

User : Gary
Month-Day Processed : 12/05/18
Time Processed : 04:52:10 PM
Injection Volume : 0.1
Sample Name : Kisspeptin-10
Cat No. : RP20494
Lot No. : PE6051812
Theoretical MW : 1302.50
Observed MW : 1303.2

Interface

Interface : ESI
Nebulizing Gas Flow : 1.5L/min
CDL Temp : 250
Block Temp : 200

Equipment

Equipment : GK11010007
Interface Bias : +4.5kV
Drying Gas Flow : 5 L/min
T.Flow : 0.2ml/min
B.conc : 50%H₂O/50%MeOH