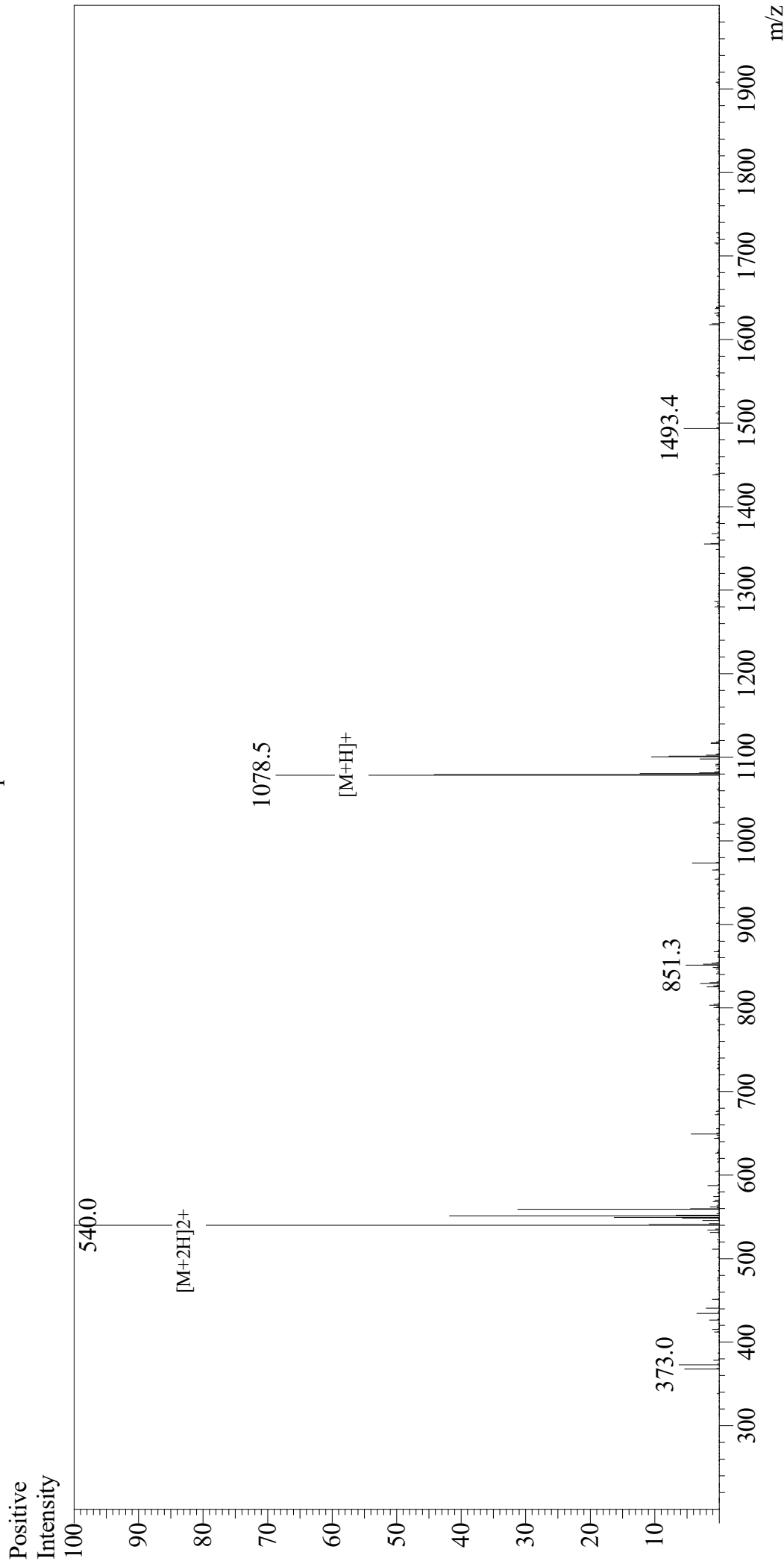


Mass Spectrum



Sample Information

User : Gary
Month-Day Processed : 12/08/19
Time Processed : 08:40:02 AM
Injection Volume : 0.4
Sample Name : NP (396-404)
Cat No. : RP20090
Lot No. : E0100019L
Theoretical MW : 1078.18
Observed MW : 1078.0

Interface : ESI
Nebulizing Gas Flow : 1.5L/min
CDL Temp : 250
Block Temp : 200

Equipment : GK11010007
Interface Bias : +4.5kV
Drying Gas Flow : 5 L/min
T.Flow : 0.2ml/min
B.conc : 50%H2O/50%MeOH