

Sample Name :Somatostatin

Cat. No. : RP10226 Lot. No. : PE2221807

Pump A : 0.065% trifluoroacetic in 100% water (v/v)

Pump B : 0.05% trifluoroacetic in 100% acetonitrile (v/v)

Total Flow:1 ml/min

Wavelength:220 nm

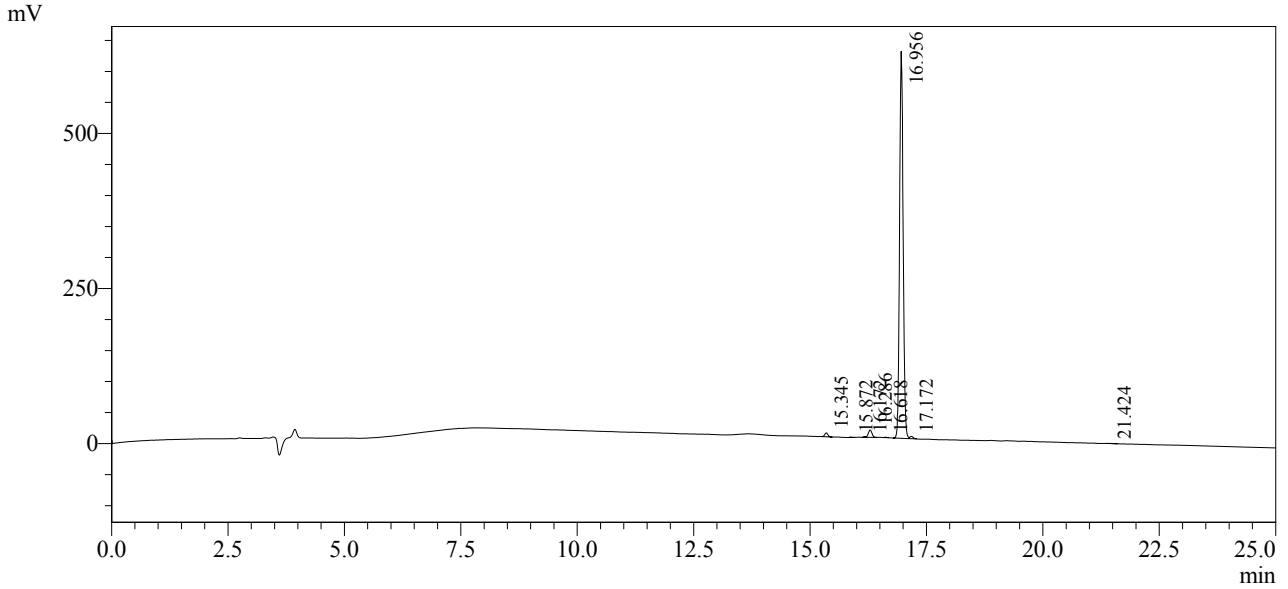
| Time | Unit | Command | Value | Comment |
|-------|------------|--------------|-------|---------|
| 0.01 | Pumps | Pump B Conc. | 5 | |
| 25.00 | Pumps | Pump B Conc. | 65 | |
| 25.01 | Pumps | Pump B Conc. | 95 | |
| 27.00 | Pumps | Pump B Conc. | 95 | |
| 27.01 | Pumps | Pump B Conc. | 5 | |
| 35.00 | Pumps | Pump B Conc. | 5 | |
| 35.01 | Controller | Stop | | |

<<Column Performance>>

<Detector A>

Column : Inertsil ODS-3 4.6 x 250 mm

Chromatogram



1 Det.A Ch1 / 220nm

Peak Table

Detector A Ch1 220nm

| Peak# | Ret. Time | Area | Height | Area % |
|-------|-----------|---------|--------|---------|
| 1 | 15.345 | 28391 | 6170 | 0.821 |
| 2 | 15.872 | 2606 | 632 | 0.075 |
| 3 | 16.172 | 4969 | 1243 | 0.144 |
| 4 | 16.286 | 62726 | 11902 | 1.814 |
| 5 | 16.618 | 1734 | 568 | 0.050 |
| 6 | 16.956 | 3339741 | 623796 | 96.566 |
| 7 | 17.172 | 16476 | 3650 | 0.476 |
| 8 | 21.424 | 1849 | 243 | 0.053 |
| Total | | 3458492 | 648204 | 100.000 |