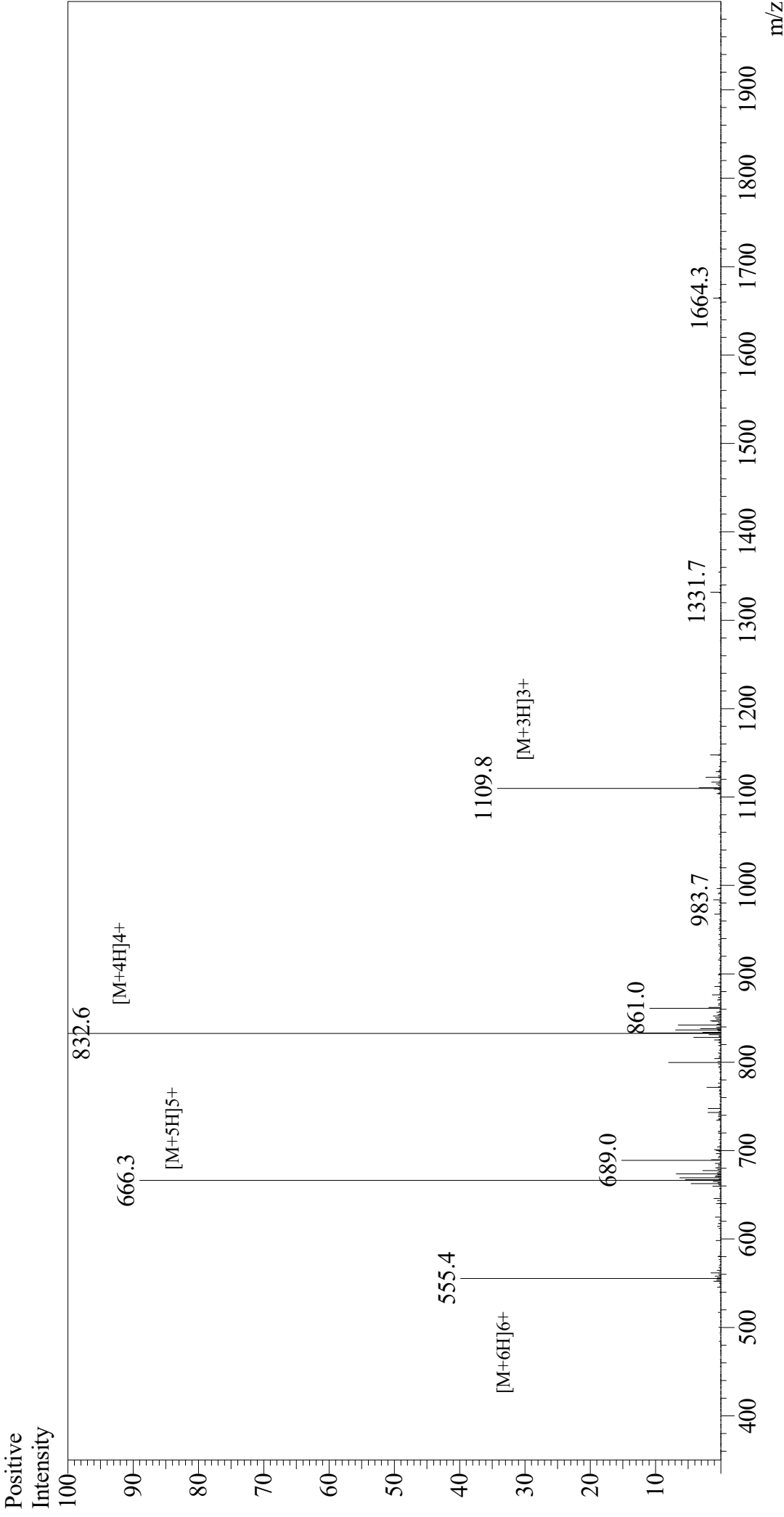


# Mass Spectrum



Sample Information  
Month-Day Processed : 05/23/21  
Time Processed : 12:45:48  
Injection Volume : 0.4  
Sample Name : VIP, human, ovine, porcine, rat  
Cat No : RP10085  
Lot No : E0629421E  
Theoretical MW : 3325.80  
Observed MW : 3326.4

Interface : ESI  
Nebulizing Gas Flow : 1.5L/min  
CDL Temp : 250  
Block Temp : 200

Equipment : GK11010007  
Interface Bias : +4.5 kV  
Drying Gas Flow : 5 L/min  
T.Flow : 0.2 ml/min  
B.conc : 50%H2O/50%MeOH