

Sample Name : Atrial Natriuretic Peptide (ANP) (1-28), rat
 Cat No.: RP11195
 Lot No.: E9571419L
 Time Processed : 14:37:18
 Month-Day-Year Processed : 12/19/2019

Pump A : 0.065% trifluoroacetic in 100% water (v/v)
 Pump B : 0.05% trifluoroacetic in 100% acetonitrile (v/v)
 Total Flow: 1 ml/min
 Wavelength: 220 nm

<<LC Time Program>>

| Time | Module | Command | Value |
|-------|------------|---------------|-------|
| 0.01 | Pumps | Pump A B.Conc | 15 |
| 25.00 | Pumps | Pump A B.Conc | 75 |
| 31.00 | Pumps | Pump A B.Conc | 95 |
| 32.00 | Pumps | Pump A B.Conc | 95 |
| 32.01 | Pumps | Pump A B.Conc | 15 |
| 40.00 | Pumps | Pump A B.Conc | 15 |
| 40.00 | Controller | Stop | |

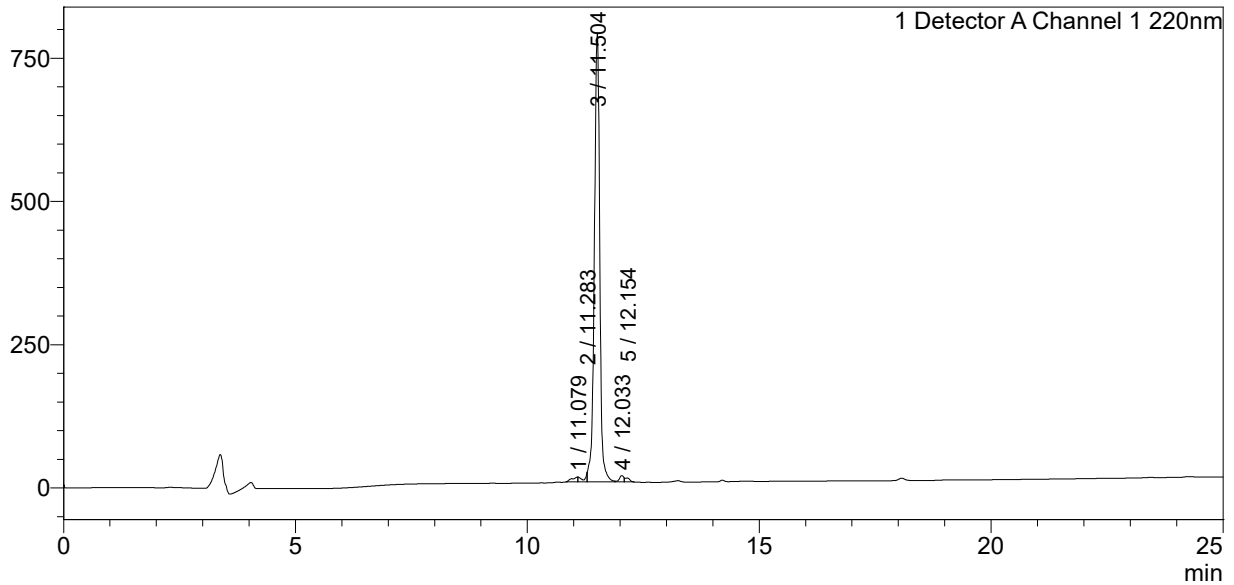
<<Column Performance>>

<Detector A>

Column : Inertsil ODS-3 4.6 x 250 mm
 Equipment: ZJ19010324

<Chromatogram>

mV



<Peak Table>

Detector A Channel 1 220nm

| Peak# | Ret. Time | Area | Height | Area% |
|-------|-----------|---------|--------|---------|
| 1 | 11.079 | 73581 | 8407 | 1.106 |
| 2 | 11.283 | 78617 | 13971 | 1.182 |
| 3 | 11.504 | 6381223 | 783487 | 95.910 |
| 4 | 12.033 | 71964 | 10914 | 1.082 |
| 5 | 12.154 | 47956 | 6799 | 0.721 |
| Total | | 6653341 | 823578 | 100.000 |