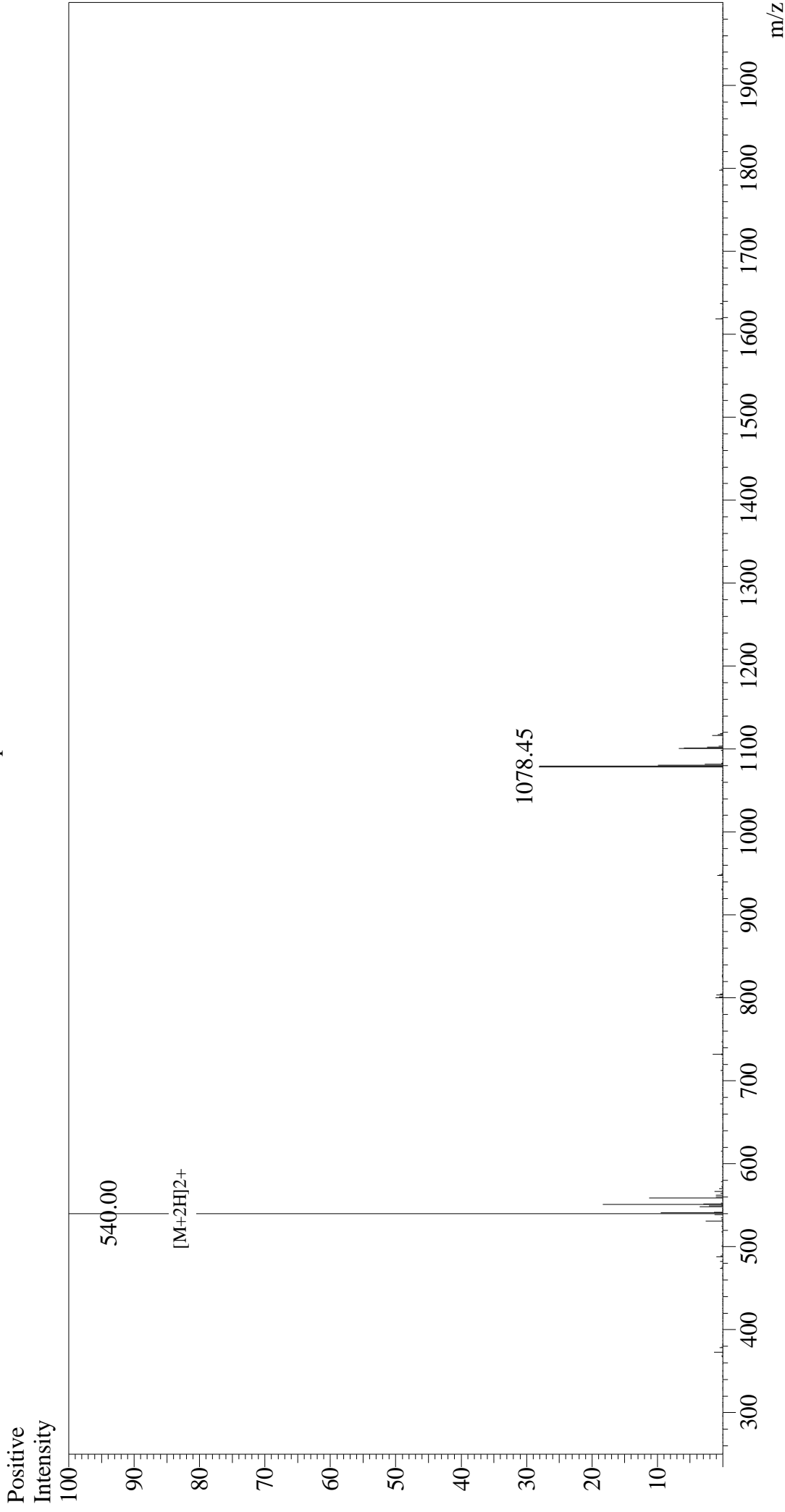


Mass Spectrum



Sample Information

Acquired by : Gary
Month-Day Processed : 10/12/17
Time Processed : 10:22:25
Injection Volume : 0.2
Sample Name : NP (396-404)
Sample ID : U5304CJ080-1
Theoretical MW : 1078.18
Observed MW : 1078.00

Interface : ESI
Nebulizing Gas Flow : 1.5L/min
CDL Temp : 250°C
Block Temp : 200°C

Interface Bias : +4.5 kV
Drying Gas Flow : 5 L/min
T.Flow : 0.2 ml/min
B.conc : 50% H2O/50% MeOH