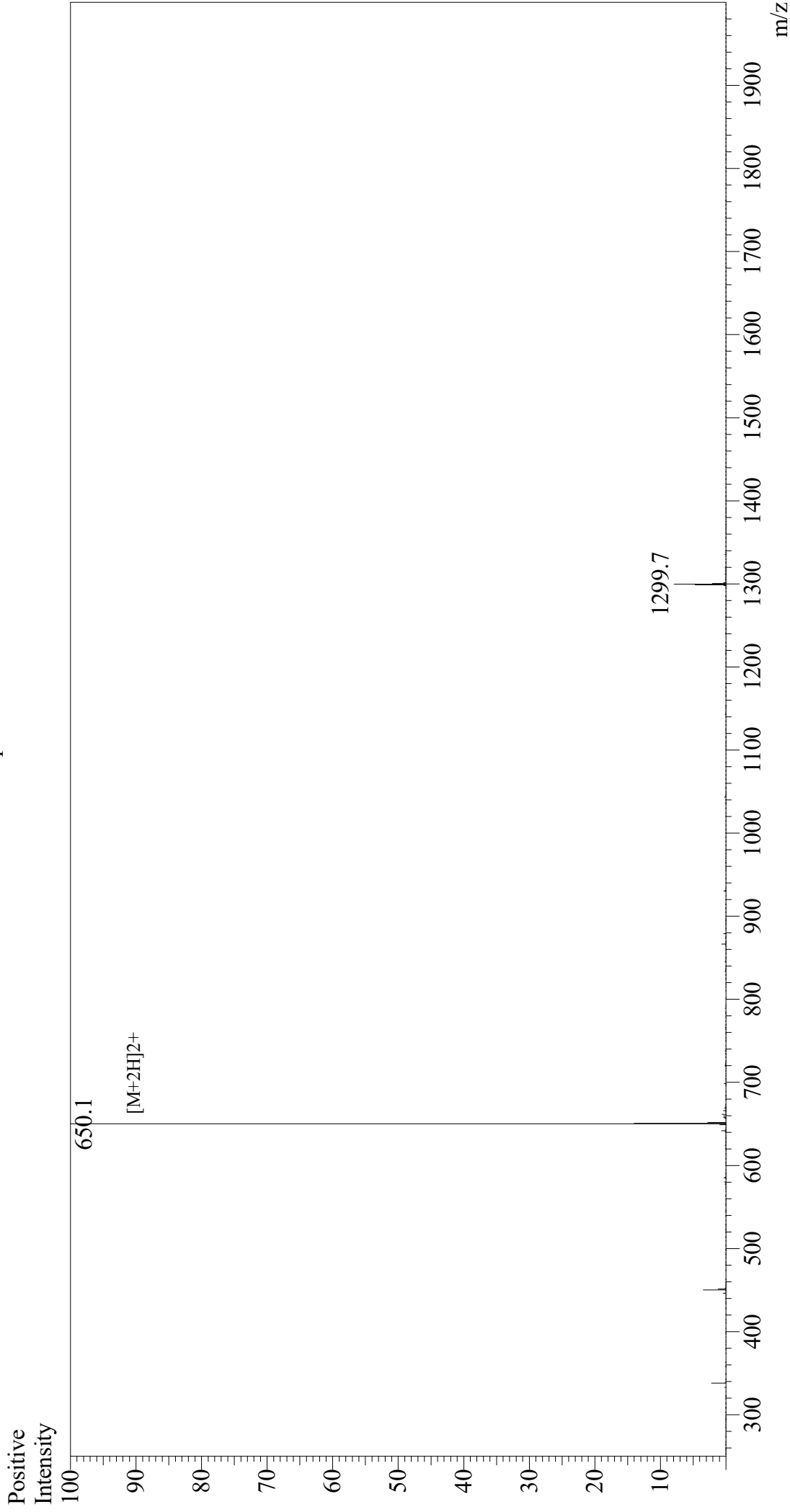


# Mass Spectrum



Sample Information  
Month-Day Processed : 04/24/21  
Time Processed : 5:54:16 PM  
Injection Volume : 0.4  
Sample Name : BDC2.5 minotope 1040-51  
Cat No. : RP20473  
Lot No. : E4754721D  
Theoretical MW : 1298.60  
Observed MW : 1298.2

Interface : ESI  
Nebulizing Gas Flow : 1.5L/min  
CDL Temp : 250  
Block Temp : 200

Equipment : GK11010007  
Interface Bias : +3.5 kV  
Drying Gas Flow : 5 L/min  
T.Flow : 0.2 ml/min  
B.conc : 50%H2O/50%MeOH