

Sample Name : Calcitonin Gene Related Peptide (CGRP) II, rat
 Cat. No. :RP11092
 Lot. No. :PE1741712

Pump A : 0.065% trifluoroacetic in 100% water (v/v)
 Pump B : 0.05% trifluoroacetic in 100% acetonitrile (v/v)
 Total Flow:1 ml/min
 Wavelength:220 nm

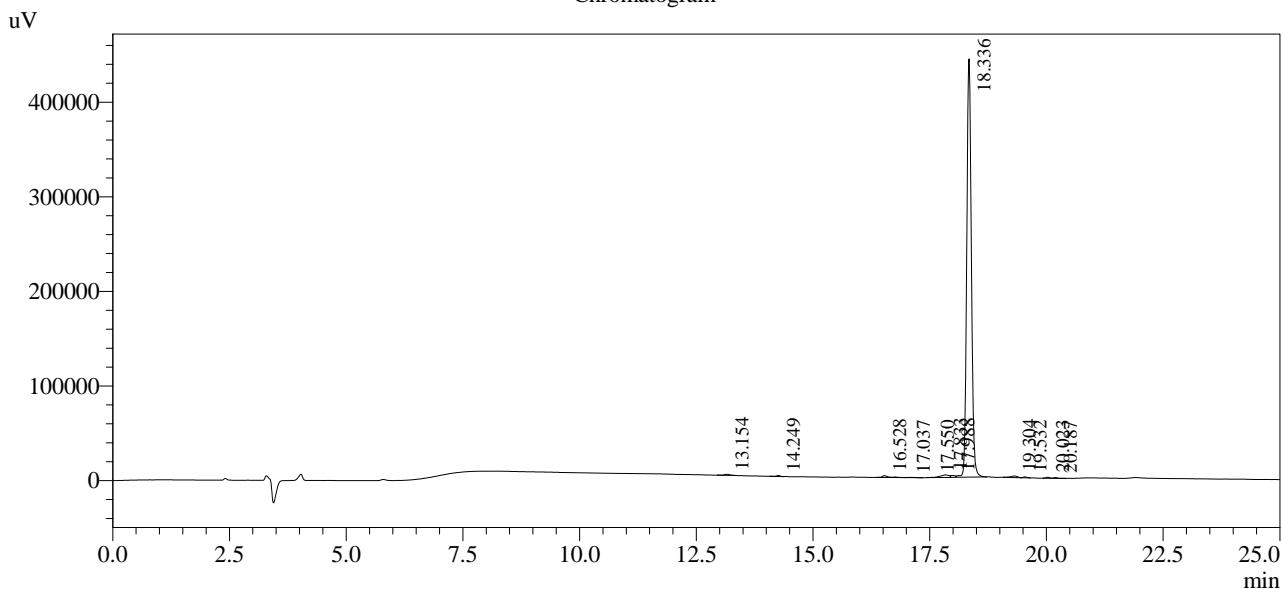
| Time | Unit | Command | Value | Comment |
|-------|------------|---------------|-------|---------|
| 0.01 | Pumps | Pump A B.Conc | 5 | |
| 25.00 | Pumps | Pump A B.Conc | 65 | |
| 25.01 | Pumps | Pump A B.Conc | 95 | |
| 31.00 | Pumps | Pump A B.Conc | 95 | |
| 31.01 | Pumps | Pump A B.Conc | 5 | |
| 40.00 | Pumps | Pump A B.Conc | 5 | |
| 40.01 | Controller | Stop | | |

<<Column Performance>>

<Detector A>

Column : Alltima™ C18 4.6 x 250 mm

Chromatogram



1 Det.A Ch1 / 220nm

Peak Table

Detector A Ch1 220nm

| Peak# | Ret. Time | Area | Height | Area % |
|-------|-----------|---------|--------|---------|
| 1 | 13.154 | 9442 | 1115 | 0.299 |
| 2 | 14.249 | 5213 | 963 | 0.165 |
| 3 | 16.528 | 14605 | 1853 | 0.462 |
| 4 | 17.037 | 1806 | 133 | 0.057 |
| 5 | 17.550 | 1455 | 260 | 0.046 |
| 6 | 17.833 | 33901 | 2693 | 1.073 |
| 7 | 17.988 | 12795 | 1929 | 0.405 |
| 8 | 18.336 | 3045502 | 442127 | 96.389 |
| 9 | 19.304 | 18605 | 1685 | 0.589 |
| 10 | 19.532 | 4972 | 962 | 0.157 |
| 11 | 20.023 | 6272 | 1089 | 0.199 |
| 12 | 20.187 | 5030 | 909 | 0.159 |
| Total | | 3159596 | 455717 | 100.000 |