

Sample Name : Dynorphin B (1 - 13)
 Cat. No. : RP20310
 Lot. No. : E4923819I
 Time Processed : 14:48:26
 Month-Day-Year Processed : 09/20/2019

Pump A : 0.065% trifluoroacetic in 100% water (v/v)
 Pump B : 0.05% trifluoroacetic in 100% acetonitrile (v/v)
 Total Flow: 1 ml/min
 Wavelength: 220 nm

Time	Unit	Command	Value	Comment
0.01	Pumps	Pump A B.Conc	5	
25.00	Pumps	Pump A B.Conc	65	
25.01	Pumps	Pump A B.Conc	95	
31.00	Pumps	Pump A B.Conc	95	
31.01	Pumps	Pump A B.Conc	5	
40.00	Pumps	Pump A B.Conc	5	
40.01	Controller	Stop		

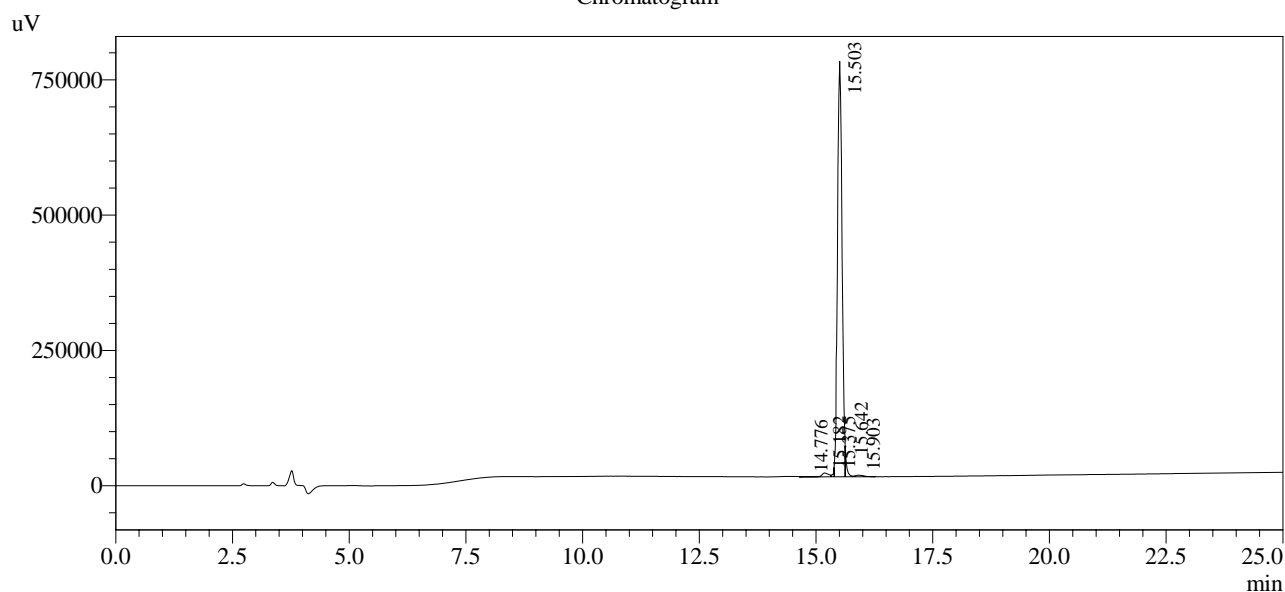
<<Column Performance>>

<Detector A>

Column : Inertsil ODS-3 4.6 x 250 mm

Equipment: GK11010009

Chromatogram



1 Det.A Ch1 / 220nm

Peak Table

Detector A Ch1 220nm

Peak#	Ret. Time	Area	Height	Area %
1	14.776	2526	362	0.046
2	15.182	71067	7108	1.294
3	15.375	27016	6033	0.492
4	15.503	5260412	764391	95.766
5	15.642	95436	36974	1.737
6	15.903	36506	2831	0.665
Total		5492963	817699	100.000