

Sample Name :c-Myc Peptide  
 Cat No. :RP11731  
 Lot No. :PE1851905  
 Time Processed :5:22:24 AM  
 Month-Day-Year Processed :05/18/19

Pump A : 0.065% trifluoroacetic in 100% water (v/v)  
 Pump B : 0.05% trifluoroacetic in 100% acetonitrile (v/v)  
 Total Flow:1 ml/min  
 Wavelength:220 nm

<<LC Time Program>>

| Time  | Module     | Command         | Value |
|-------|------------|-----------------|-------|
| 0.01  | Pumps      | Solvent B Conc. | 5     |
| 25.00 | Pumps      | Solvent B Conc. | 65    |
| 25.01 | Pumps      | Solvent B Conc. | 95    |
| 27.00 | Pumps      | Solvent B Conc. | 95    |
| 27.01 | Pumps      | Solvent B Conc. | 5     |
| 35.00 | Pumps      | Solvent B Conc. | 5     |
| 35.01 | Controller | Stop            |       |

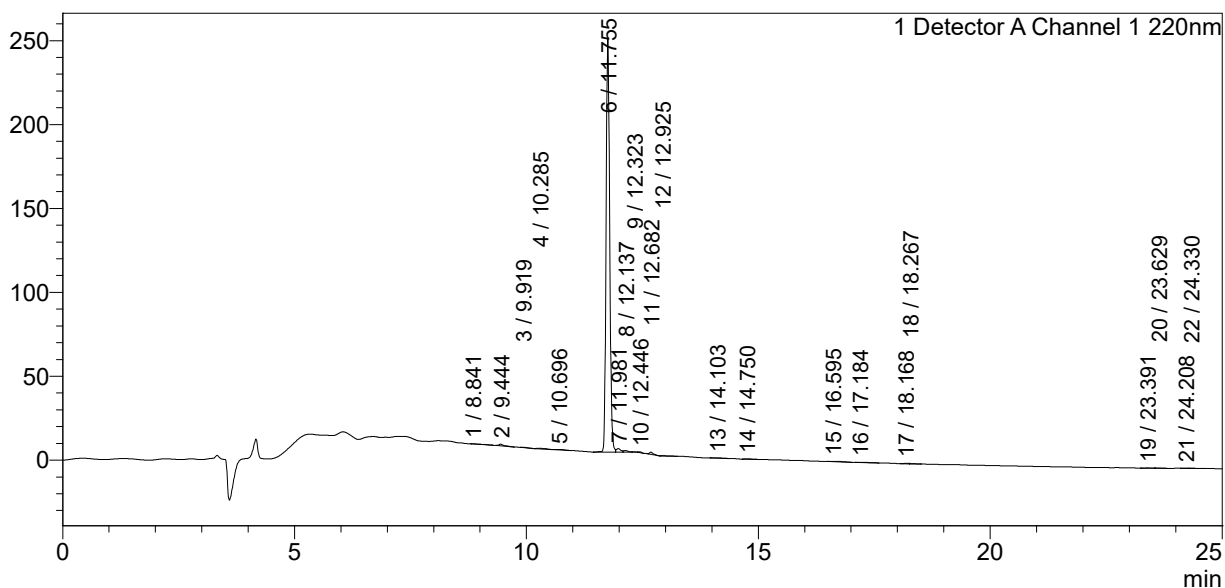
<<Column Performance>>

<Detector A>

Column : Inertsil ODS-3 4.6 x 250 mm  
 Equipment: ZJ19010141

### <Chromatogram>

mV



### <Peak Table>

Detector A Channel 1 220nm

| Peak# | Ret. Time | Area    | Height | Area%  |
|-------|-----------|---------|--------|--------|
| 1     | 8.841     | 2682    | 103    | 0.190  |
| 2     | 9.444     | 6435    | 924    | 0.457  |
| 3     | 9.919     | 1316    | 178    | 0.093  |
| 4     | 10.285    | 4149    | 298    | 0.294  |
| 5     | 10.696    | 2462    | 198    | 0.175  |
| 6     | 11.755    | 1339696 | 246150 | 95.055 |
| 7     | 11.981    | 13991   | 2120   | 0.993  |
| 8     | 12.137    | 6820    | 970    | 0.484  |
| 9     | 12.323    | 1238    | 268    | 0.088  |
| 10    | 12.446    | 1931    | 510    | 0.137  |
| 11    | 12.682    | 7213    | 1361   | 0.512  |
| 12    | 12.925    | 1174    | 90     | 0.083  |
| 13    | 14.103    | 2662    | 258    | 0.189  |
| 14    | 14.750    | 2284    | 175    | 0.162  |
| 15    | 16.595    | 4572    | 239    | 0.324  |

| Peak# | Ret. Time | Area    | Height | Area%   |
|-------|-----------|---------|--------|---------|
| 16    | 17.184    | 1596    | 84     | 0.113   |
| 17    | 18.168    | 1531    | 164    | 0.109   |
| 18    | 18.267    | 1606    | 209    | 0.114   |
| 19    | 23.391    | 1521    | 121    | 0.108   |
| 20    | 23.629    | 1221    | 135    | 0.087   |
| 21    | 24.208    | 1323    | 133    | 0.094   |
| 22    | 24.330    | 1967    | 177    | 0.140   |
| Total |           | 1409390 | 254864 | 100.000 |