

Sample Name : Atrial Natriuretic Peptide (ANP) (1-28), rat  
 Cat. No. : RP11195  
 Lot. No. : PE0451702

Pump A : 0.065% trifluoroacetic in 100% water (v/v)  
 Pump B : 0.05% trifluoroacetic in 100% acetonitrile (v/v)  
 Total Flow:1 ml/min  
 Wavelength:220 nm

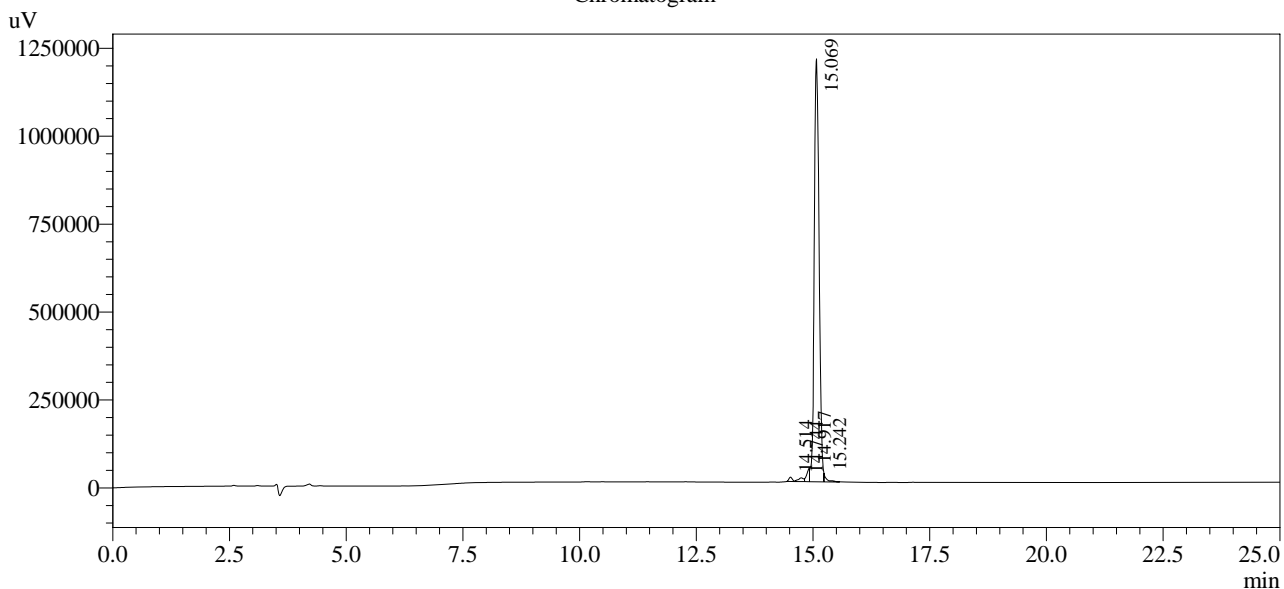
| Time  | Unit       | Command       | Value | Comment |
|-------|------------|---------------|-------|---------|
| 0.01  | Pumps      | Pump A B.Conc | 5     |         |
| 25.00 | Pumps      | Pump A B.Conc | 65    |         |
| 25.01 | Pumps      | Pump A B.Conc | 95    |         |
| 31.00 | Pumps      | Pump A B.Conc | 95    |         |
| 31.01 | Pumps      | Pump A B.Conc | 5     |         |
| 40.00 | Pumps      | Pump A B.Conc | 5     |         |
| 40.01 | Controller | Stop          |       |         |

<<Column Performance>>

<Detector A>

Column : Alltima™ C18 4.6 x 250 mm

Chromatogram



1 Det.A Ch1 / 220nm

Peak Table

Detector A Ch1 220nm

| Peak# | Ret. Time | Area    | Height  | Area %  |
|-------|-----------|---------|---------|---------|
| 1     | 14.514    | 62629   | 12365   | 0.687   |
| 2     | 14.744    | 84408   | 10622   | 0.926   |
| 3     | 14.917    | 157739  | 38164   | 1.731   |
| 4     | 15.069    | 8724795 | 1202501 | 95.732  |
| 5     | 15.242    | 84212   | 19592   | 0.924   |
| Total |           | 9113784 | 1283245 | 100.000 |