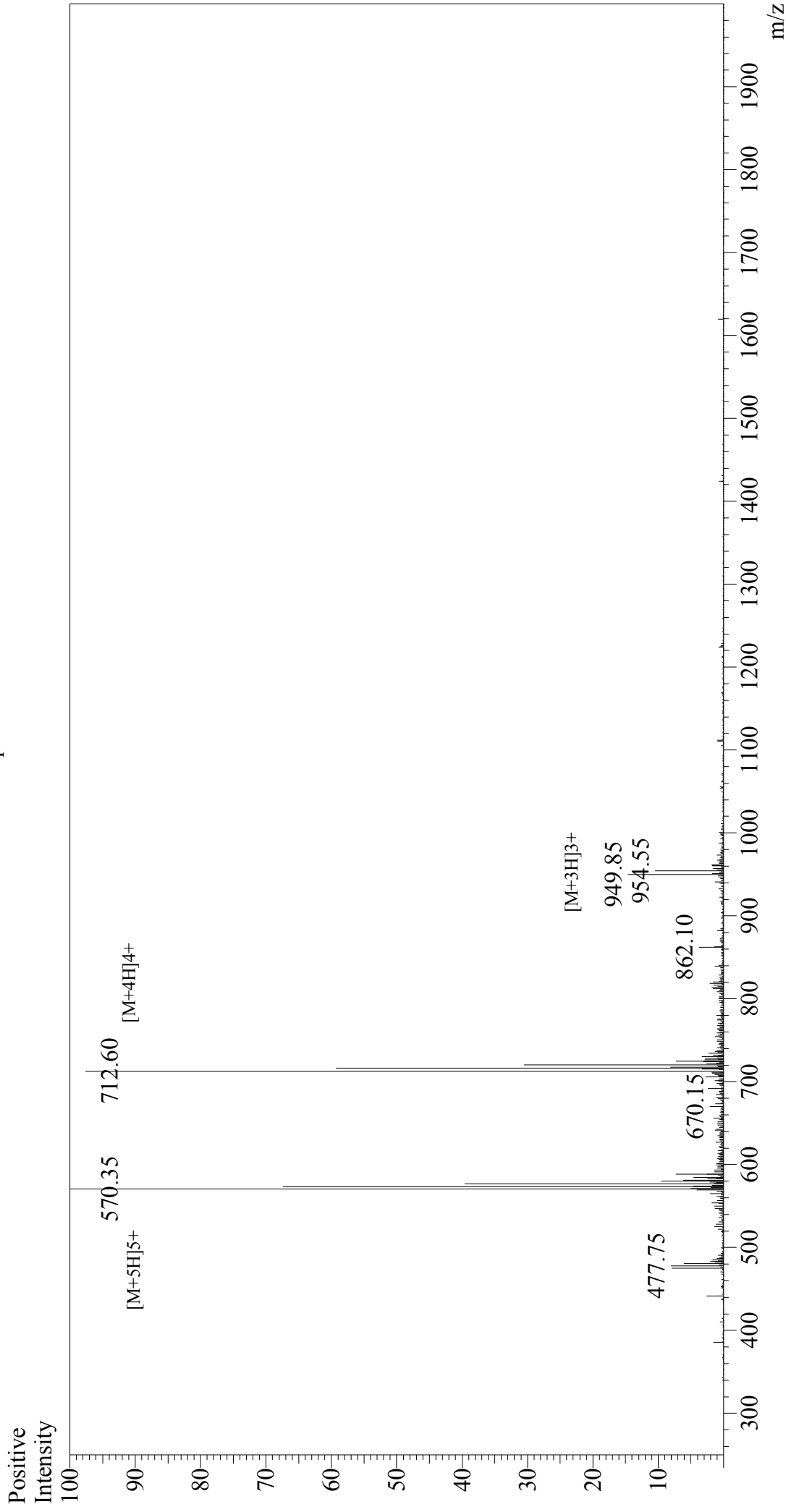


Mass Spectrum



Sample Information

Acquired by : Gary
Month-Day Processed : 05/29/18
Time Processed : 11:08:21
Injection Volume : 0.2
Sample Name : Melittin
Cat. No. : RP10290
Lot. No. : PE5351805
Theoretical MW : 2846.46
Observed MW : 2846.75

Interface : ESI
Nebulizing Gas Flow : 1.5L/min
CDL Temp : 250°C
Block Temp : 200°C

Interface Bias : +4.5 kV
Drying Gas Flow : 5 L/min
T.Flow : 0.2 ml/min
B.conc : 50% H2O/50% MeOH