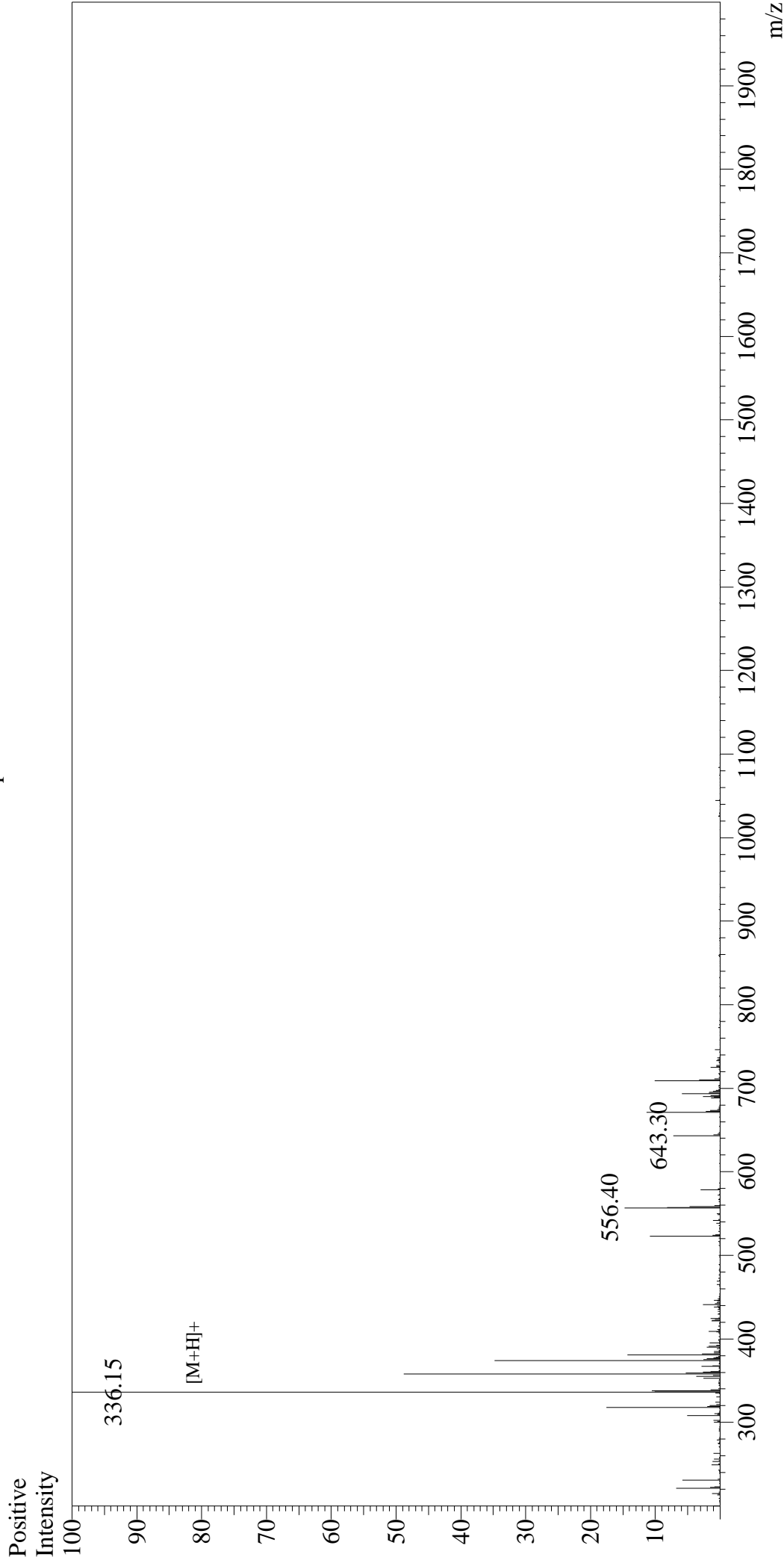


Mass Spectrum



Sample Information

User : Gary
Month-Day Processed : 12/07/16
Time Processed : 10:58:12
Injection Volume : 0.2
Sample Name : N-Formyl-L-Met-Ala-Ser
Cat No. : RP10587
Lot No. : PE4171612
Theoretical MW : 336.40
Observed MW : 335.15

Interface : ESI
Nebulizing Gas Flow : 1.5L/min
CDL Temp : 250°C
Block Temp : 200°C

Interface Bias : +4.5kV
Drying Gas Flow : 5 L/min
T.Flow : 0.2ml/min
B.conc : 50%H₂O/50%MeOH