

Sample Name : N-Formyl-Met-Ala-Ser  
 Cat. No. : RP10587  
 Lot. No. : PE4171612

Pump A : 0.065% trifluoroacetic in 100% water (v/v)  
 Pump B : 0.05% trifluoroacetic in 100% acetonitrile (v/v)  
 Total Flow:1 ml/min  
 Wavelength:220 nm

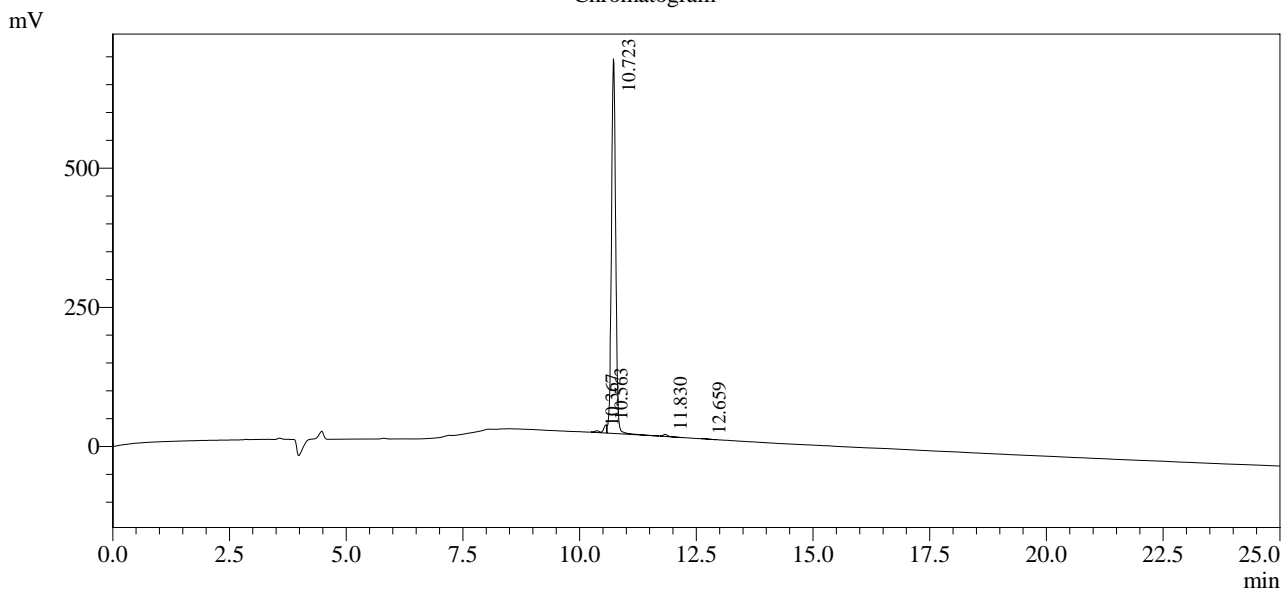
Time	Unit	Command	Value	Comment
0.01	Pumps	Pump A B.Conc	5	
25.00	Pumps	Pump A B.Conc	65	
25.01	Pumps	Pump A B.Conc	95	
31.00	Pumps	Pump A B.Conc	95	
31.01	Pumps	Pump A B.Conc	5	
40.00	Pumps	Pump A B.Conc	5	
40.01	Controller	Stop		

<<Column Performance>>

<Detector A>

Column : Alltima™ C18 4.6 x 250 mm

Chromatogram



1 Det.A Ch1 / 220nm

Peak Table

Detector A Ch1 220nm

Peak#	Ret. Time	Area	Height	Area %
1	10.367	19996	3149	0.460
2	10.563	66228	14789	1.522
3	10.723	4238028	672997	97.406
4	11.830	24108	3728	0.554
5	12.659	2528	382	0.058
Total		4350889	695046	100.000