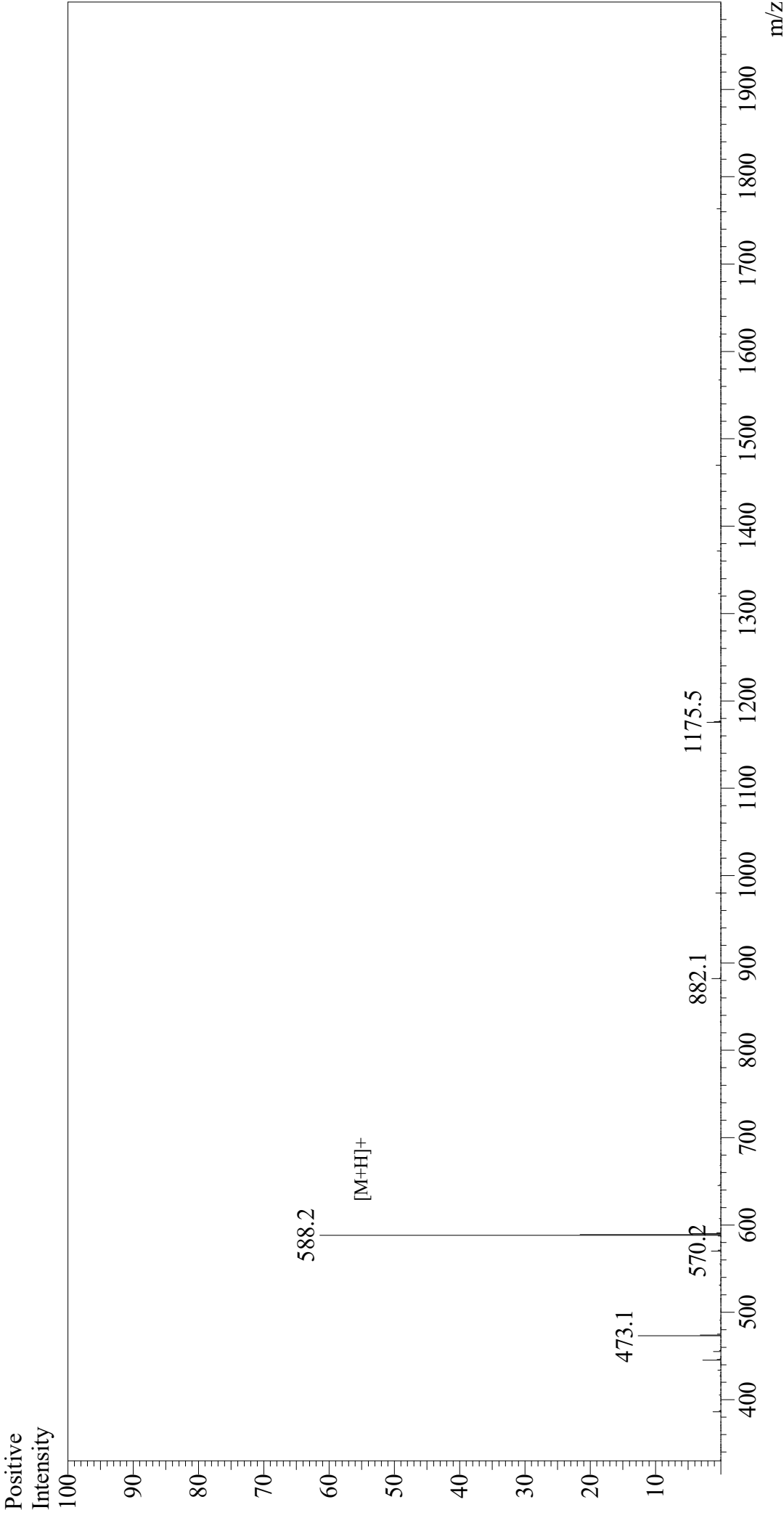


# Mass Spectrum



Sample Information  
Month-Day Processed : 01/23/21  
Time Processed : 10:59:08 PM  
Injection Volume : 0.4  
Sample Name : GRGDSP  
Cat No. : RP20255  
Lot No. : E2275821A  
Theoretical MW : 587.59  
Observed MW : 587.2

Interface : ESI  
Nebulizing Gas Flow : 1.5L/min  
CDL Temp : 250  
Block Temp : 200

Equipment : GK11010007  
Interface Bias : +4.5 kV  
Drying Gas Flow : 5 L/min  
T.Flow : 0.2 ml/min  
B.conc : 50% H2O/50% MeOH